

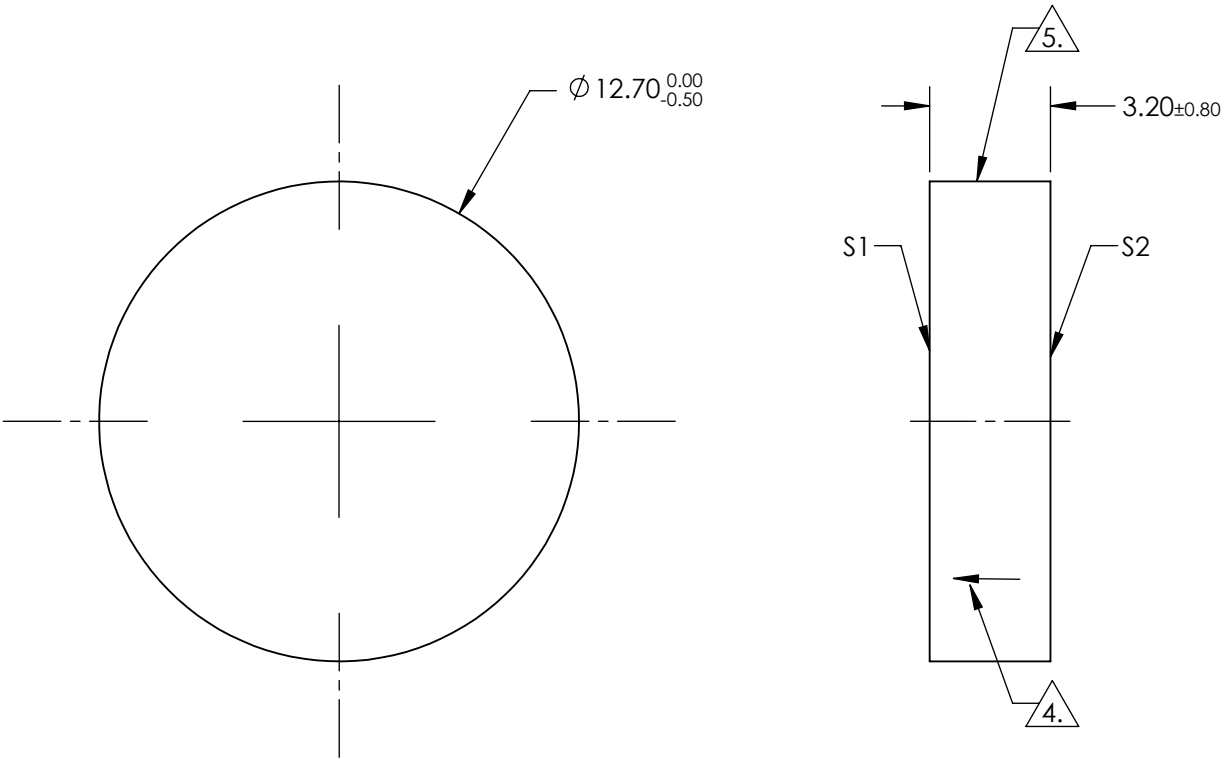
- NOTES:
- 1. ALLOWABLE OPTICAL MATERIAL:  
Fused Silica
  - 2. SURFACE S2 TO BE PARALLEL WITH SURFACE S1 TO <3 ARCMIN
  - 3. COATING (APPLY ACROSS CLEAR APERTURE)

S1: R(AVG) >96% @ 700 - 2000nm  
R(AVG) >96% @ 2000 - 10,000nm

S2: NONE


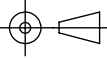
4. ARROW ON EDGE POINTING TOWARD SURFACE S1.

5. FINE GROUND SURFACE



**FOR INFORMATION ONLY:**  
**DO NOT MANUFACTURE**  
**PARTS TO THIS DRAWING**

SPECIFICATIONS SUBJECT TO CHANGE WITHOUT NOTICE  
DIMENSIONS ARE FOR REFERENCE ONLY

	S1	S2	 Edmund Optics®			
SHAPE	PLANO	PLANO				
SURFACE ACCURACY AT 632.8	1/10 WAVE	NA				
SURFACE QUALITY	60-40	COMMERCIAL POLISH	ALL DIMS IN	mm	TITLE	0.5" Dia. Protected Gold, λ/10 Flat Fused Silica
CLEAR APERTURE	Ø 11.43	Ø 11.43			DWG NO	43-319-566
BEVEL MAX FACE	0.5 x 45°	0.5 x 45°				SHEET 1 OF 1