
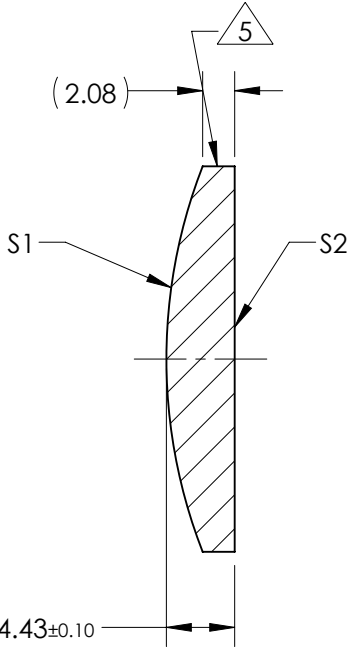
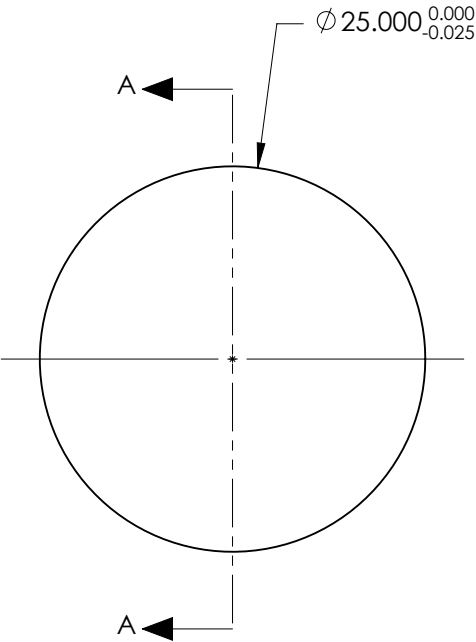


NOTES:

- SUBSTRATE:  
CORNING: FUSED SILICA 458/678
- ROHS COMPLIANT
- CENTERING TOLERANCE (AT 587.6nm):  
BEAM DEVIATION (HALF ANGLE): <1 ARCMIN
- COATING (APPLY ACROSS COATING APERTURE)  
  
S1: NONE  
S2: NONE
-  FINE GRIND SURFACE
- POWER, IRREGULARITY, AND SURFACE QUALITY  
SPECIFICATIONS APPLY ACROSS CLEAR APERTURE
- FOCAL LENGTH (EFL): 75.00mm ±1%  
BACK FOCAL LENGTH (BFL): 71.96mm
- PROTECTIVE BEVEL AS NEEDED
- DESIGN WAVELENGTH: 587.6nm



SECTION A-A

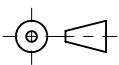
***FOR INFORMATION ONLY:***  
**DO NOT MANUFACTURE**  
**PARTS TO THIS DRAWING**

	S1	S2
SHAPE	CONVEX	PLANO
RADIUS	34.39	INFINITY
SURFACE QUALITY	20 - 10	20 - 10
MIN CLEAR APERTURE	Ø 22.50	Ø 22.50
MIN COATING APERTURE	N/A	N/A
POWER AT 632.8nm	2.00 RINGS	2.00 RINGS
IRREGULARITY AT 632.8nm	0.20 RINGS	0.20 RINGS

SPECIFICATIONS SUBJECT TO CHANGE WITHOUT NOTICE  
DIMENSIONS ARE FOR REFERENCE ONLY

 **Edmund Optics®**

TITLE	25mm Diameter x 75mm FL, Uncoated, Laser Grade PCX Lens		
DWG NO	67096	SHEET 1 OF 1	

THIRD ANGLE PROJECTION	
ALL DIMS IN	mm