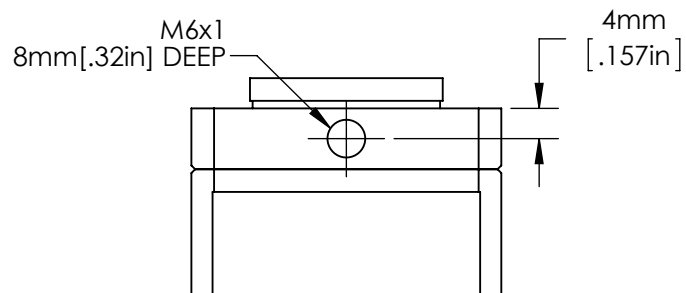
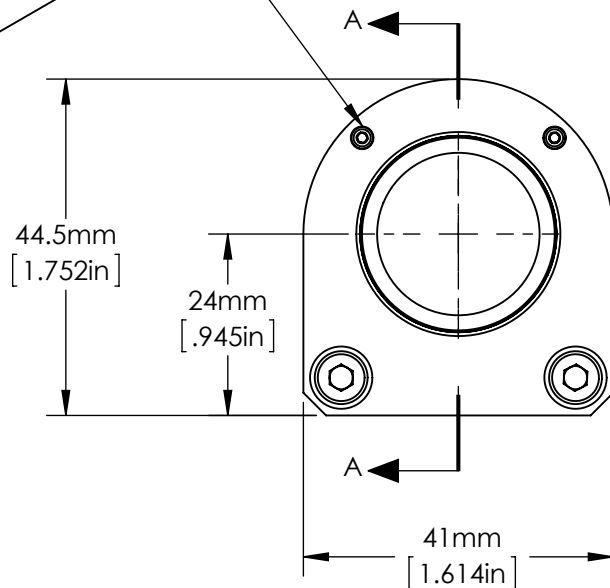
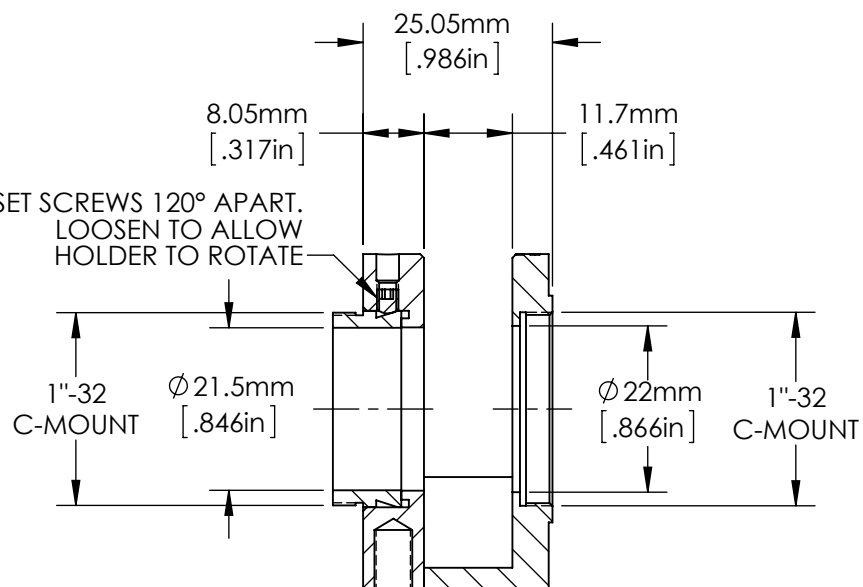


2X 4-40 FLAT POINT
SET SCREWS FOR
LOCKING SEPARATELY
PURCHASED CELL



3X 4-40 SET SCREWS 120° APART.
LOOSEN TO ALLOW
HOLDER TO ROTATE



SECTION A-A

SPECIFICATIONS SUBJECT TO CHANGE WITHOUT NOTICE
DIMENSIONS ARE FOR REFERENCE ONLY
DIMENSIONS ARE IN mm [INCHES]

FOR USE WITH CELLS, SN 84347 AND SN 84348.

Edmund Optics®

TITLE	C-Mount Filter/Polarizer Holder, M6					
DWG NO	84345	MATERIAL	BLACK ANODIZED ALUMINUM	SHEET 1 OF 1	REV	000

Enable 3D View