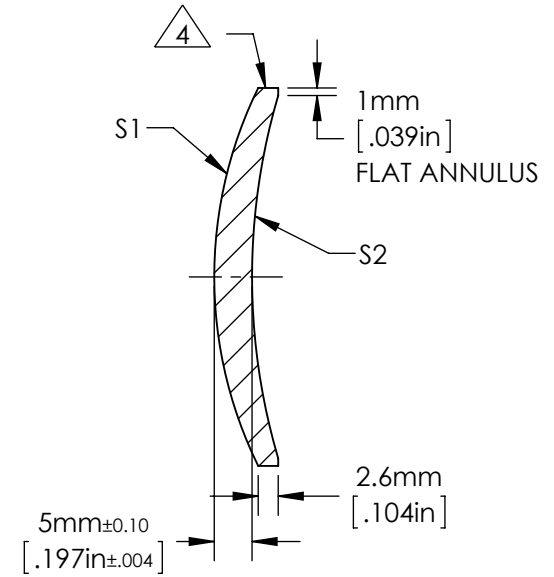
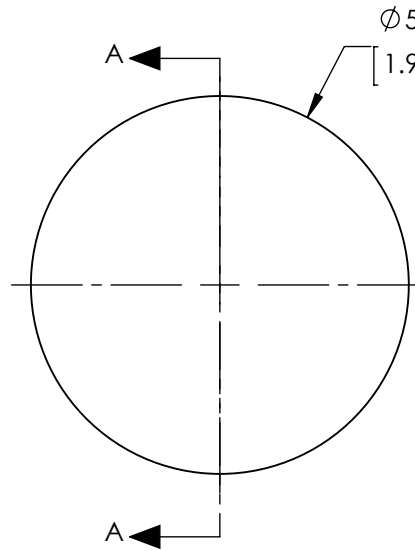


NOTES:


1. ALLOWABLE OPTICAL MATERIAL:  
OPTICAL GRADE GERMANIUM
2. CENTERING TOLERANCE (AT 587.6nm):  
BEAM DEVIATION: <3 ARCMINUTES
3. COATING (APPLY ACROSS COATING APERTURE)  
S1 & S2: T(AVG) > 94% FROM 3.0-5.0µm  
R(AVG) <1.0% FROM 3.0-5.0µm

4. EDGES DIAMOND TURNED



SECTION A-A

**FOR INFORMATION ONLY:  
DO NOT MANUFACTURE PARTS TO THIS DRAWING**

	S1	S2	EFL (AT 10.6µm)	(50.00)	 <b>Edmund Optics®</b>	
SHAPE	CONVEX	CONCAVE	BFL (AT 10.6µm)	(46.69)		TITLE
RADIUS	56.64	84.91	ALL DIMS IN	mm	DWG NO	87964
SURFACE QUALITY	60 - 40	60 - 40				
CLEAR APERTURE	≥ ø45.00	≥ ø45.00				
BEVEL MAX FACE	0.3mm x 45°	0.3mm x 45°				