

NOTES:

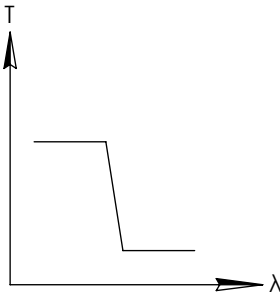
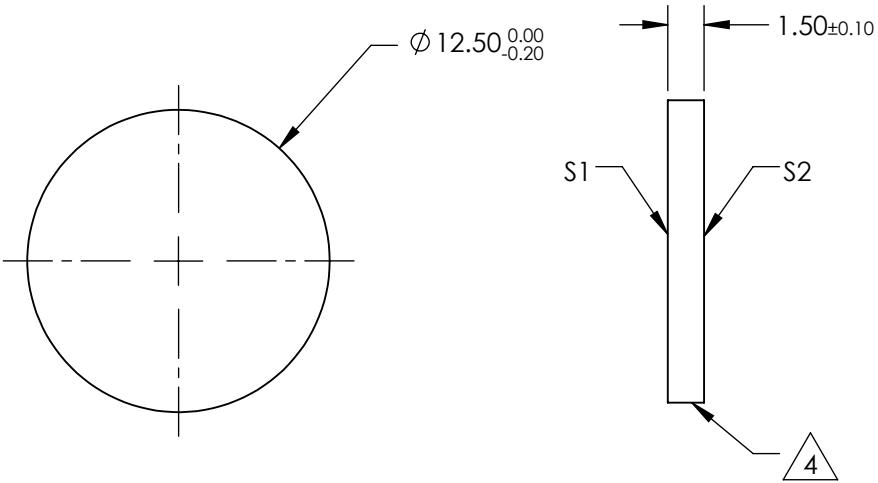
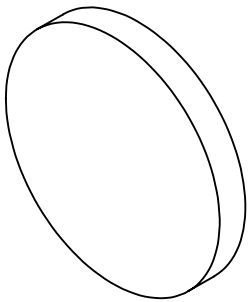
- 1. SUBSTRATE
- 2. SURFACE S2 TO BE PARALLEL WITH SURFACE S1 TO WITHIN  $\pm 3$  arcsec
- 3. COATING (APPLY ACROSS COATING APERTURE)  
DURABILITY:  
PERFORMANCE SPECIFICATIONS:  
T(avg): >85% @ AOI 0° FROM 550 - 1150nm  
T(avg): <1% @ AOI 0° FROM 1290 - 1575nm  
T(avg): =50% FOR AOI 0° @ 1200nm  $\pm$  2%

S2: SINGLE LAYER MgF2

4. FINE GRIND SURFACE

- 5. POWER, IRREGULARITY, AND SURFACE QUALITY SPECIFICATIONS  
APPLY ACROSS CLEAR APERTURE
- 6. TRANSMITTED WAVEFRONT DISTORTION P-V @ 632.8nm 1/10  $\lambda$
- 7. ROHS COMPLIANT

FOR INFORMATION ONLY:  
DO NOT MANUFACTURE  
PARTS TO THIS DRAWING



SHORTPASS FILTER

SPECIFICATIONS SUBJECT TO CHANGE WITHOUT NOTICE  
DIMENSIONS ARE FOR REFERENCE ONLY

Rev. A	S1	S2
SHAPE	PLANO	PLANO
SURFACE QUALITY	40-20	40-20
CLEAR APERTURE	Ø10	Ø10
BEVEL	PROTECTIVE AS NEEDED	PROTECTIVE AS NEEDED

Edmund Optics®



ALL DIMS IN mm

TITLE	OD2, Ø12.5mm, 1200nm, SHORTPASS FILTER		
DWG NO	67287	SHEET 1 OF 1	