

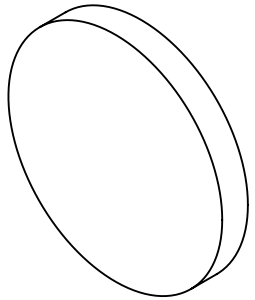
NOTES:

1. SUBSTRATE
UV GRADE FUSED SILICA
2. SURFACE S2 TO BE PARALLEL WITH SURFACE S1 TO WITHIN 5 ARCSEC
3. COATING (APPLY ACROSS COATING APERTURE)

PERFORMANCE SPECIFICATIONS @ 0° AOI
T(AVG): >85% FROM 1190 - 2000nm
T(AVG): < 1% FROM 875 - 1095nm
T(ABS): = 50% @ 1150nm

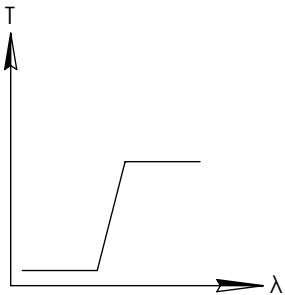
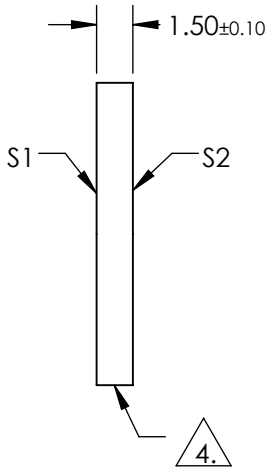
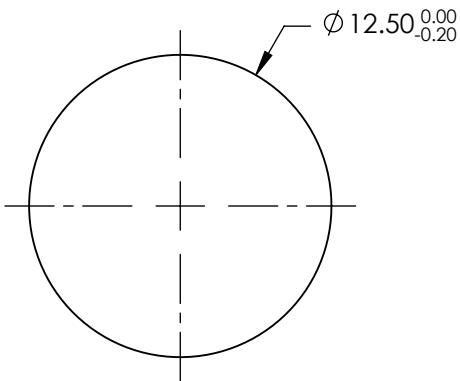
S1: MULTILAYER DIELECTRIC COATING
S2: SINGLE LAYER MgF2

**FOR INFORMATION ONLY:
DO NOT MANUFACTURE
PARTS TO THIS DRAWING**



4. FINE GRIND SURFACE

5. TRANSMITTED WAVEFRONT DISTORTION RMS@ 632.8nm ≤ ¼ WAVE
6. ROHS COMPLIANT



LONGPASS FILTER

SPECIFICATIONS SUBJECT TO CHANGE WITHOUT NOTICE
DIMENSIONS ARE FOR REFERENCE ONLY

| | S1 | S2 |
|------------------|----------------------|----------------------|
| SHAPE | PLANO | PLANO |
| SURFACE QUALITY | 40-20 | 40-20 |
| CLEAR APERTURE | 80% | 80% |
| COATING APERTURE | Ø11.00 | Ø11.00 |
| BEVEL | PROTECTIVE AS NEEDED | PROTECTIVE AS NEEDED |

Edmund Optics®



ALL DIMS IN

mm

TITLE

OD2, Ø12.5mm, 1150nm LONGPASS FILTER

DWG NO

67294

SHEET
1 OF 1