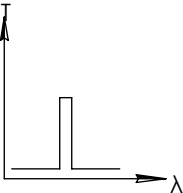
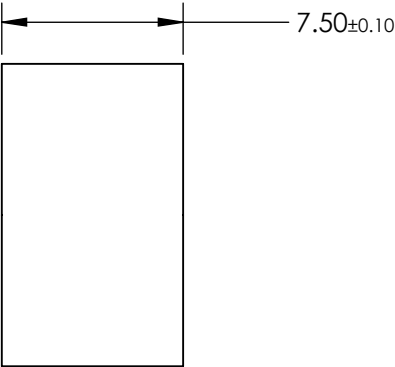
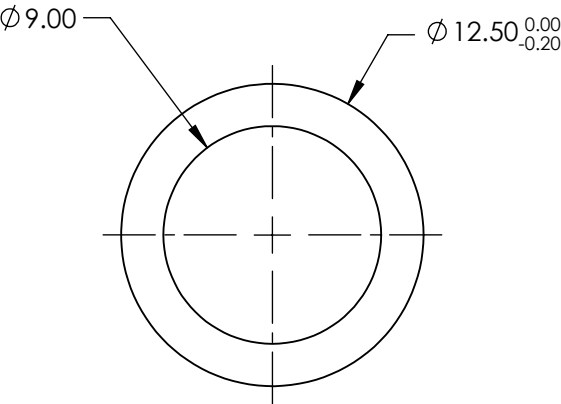
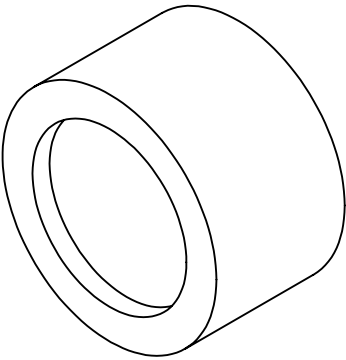


**FOR INFORMATION ONLY:
DO NOT MANUFACTURE
PARTS TO THIS DRAWING**



BANDPASS FILTER

| | VALUE |
|----------------------------|--------------------------------|
| OPTICAL DENSITY | ≥3.0 |
| CENTER WAVELENGTH (CWL) | 500 ±15 nm |
| FULL WIDTH HALF MAX (FWHM) | 80 ±15 nm |
| MINIMUM TRANSMISSION | ≥60 % |
| BLOCKING | 200 - 1200nmnm |
| SURFACE QUALITY | 80-50 |
| CONSTRUCTION | MOUNTED IN BLACK ANODIZED RING |
| COATING TYPE | TRADITIONAL COATED |

SPECIFICATIONS SUBJECT TO CHANGE WITHOUT NOTICE
DIMENSIONS ARE FOR REFERENCE ONLY



| | | | | |
|------------------------|----|--------|---|-----------------|
| THIRD ANGLE PROJECTION | | TITLE | Ø12.5mm, 500nm x 80nm, MOUNTED BANDPASS FILTER | |
| ALL DIMS IN | mm | DWG NO | 65734 | SHEET 1 OF 1 |