

NOTES:

1. SUBSTRATE MATERIAL:  
N-SF5

2. COATING (APPLY ACROSS CLEAR APERTURE)

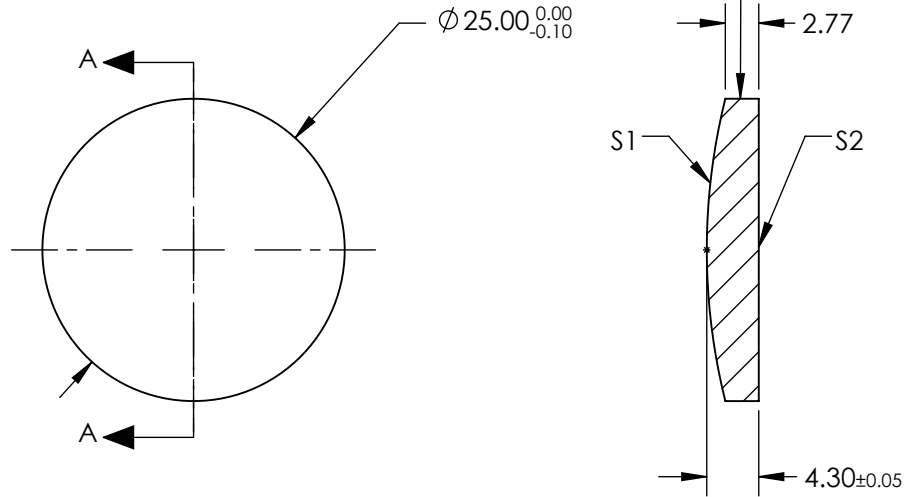
S1: ENHANCED ALUMINUM  
R(avg) >95% @ 450 - 650nm

S2: NONE

3. POWER, IRREGULARITY, SURFACE QUALITY, AND COATING SPECIFICATIONS APPLY ACROSS CLEAR APERTURE

 FINE GROUND SURFACE

5. ROHS COMPLIANT



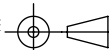
SECTION A-A

**FOR INFORMATION ONLY:  
DO NOT MANUFACTURE  
PARTS TO THIS DRAWING**

SPECIFICATIONS SUBJECT TO CHANGE WITHOUT NOTICE  
DIMENSIONS ARE FOR REFERENCE ONLY

REV. A	S1	S2
SHAPE	CONVEX	PLANO
RADIUS	51.68	INFINITY
EFFECTIVE FOCAL LENGTH	-25.8mm	N/A
FOCAL LENGTH TOLERANCE	±2%	N/A
SURFACE QUALITY	60-40	COMMERCIAL POLISH
CLEAR APERTURE	90%	N/A
BEVEL	PROTECTIVE AS NEEDED	PROTECTIVE AS NEEDED

THIRD ANGLE PROJECTION



ALL DIMS IN

mm



TITLE

∅25mm, -25.8mm FL ENHANCED ALUMINUM, CONVEX SPHERICAL MIRROR

DWG NO

64062

SHEET  
1 OF 1