

NOTES:

1. SUBSTRATE MATERIAL:
N-SF5
2. COATING (APPLY ACROSS CLEAR APERTURE)

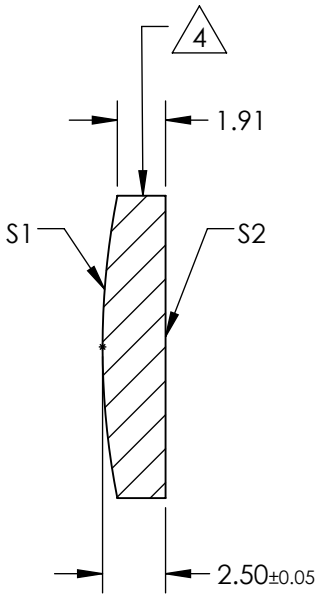
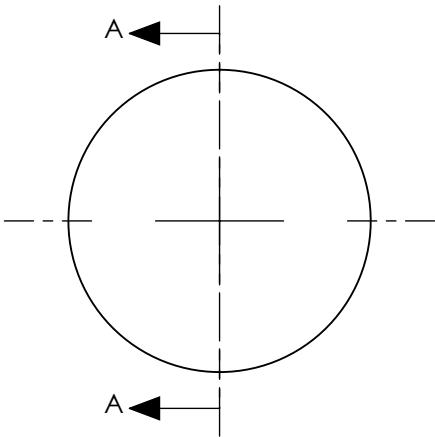
S1: PROTECTED GOLD
R(avg) >89% @ 250 - 450nm
R(avg) >94% @ 700 - 800nm

S2: NONE

3. POWER, IRREGULARITY, SURFACE QUALITY, AND COATING
SPECIFICATIONS APPLY ACROSS CLEAR APERTURE

4. FINE GROUND SURFACE

5. ROHS COMPLIANT



SECTION A-A

**FOR INFORMATION ONLY:
DO NOT MANUFACTURE
PARTS TO THIS DRAWING**

SPECIFICATIONS SUBJECT TO CHANGE WITHOUT NOTICE
DIMENSIONS ARE FOR REFERENCE ONLY

REV. A	S1	S2				
SHAPE	CONVEX	PLANO				
RADIUS	31	INFINITY				
EFFECTIVE FOCAL LENGTH	-15.5mm	N/A				
FOCAL LENGTH TOLERANCE	±2%	N/A				
SURFACE QUALITY	60-40	COMMERCIAL POLISH				
CLEAR APERTURE	90%	N/A				
BEVEL	PROTECTIVE AS NEEDED	PROTECTIVE AS NEEDED				

THIRD ANGLE PROJECTION		TITLE		DWG NO		SHEET 1 OF 1	
ALL DIMS IN		mm		64072			

Edmund Optics®

Ø12mm, -15.5mm FL PROTECTED GOLD,
CONVEX SPHERICAL MIRROR