

NOTES:

- 1. SUBSTRATE: N-BK7
- 2. COATING (APPLY ACROSS CLEAR APERTURE)

S1: GOLD WITH PROTECTIVE OVERCOAT
R(AVG) > 96% FROM 0.7-10.0 Microns @ 0° AOI

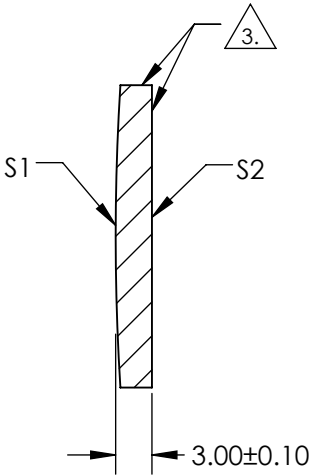
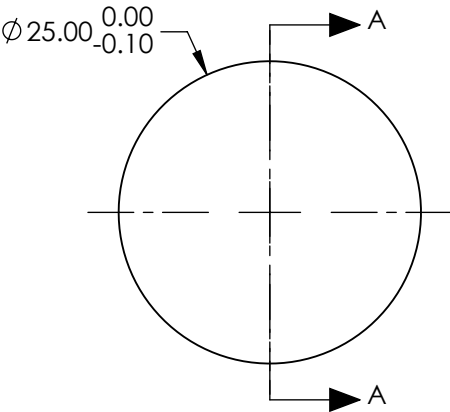
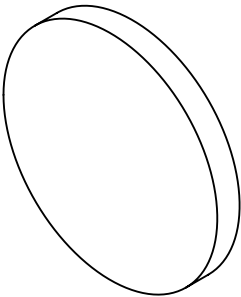
S2: NONE

3. FINE GRIND SURFACE

- 4. POWER, IRREGULARITY, AND SURFACE QUALITY SPECIFICATIONS
APPLY ACROSS CLEAR APERTURE

- 5. ROHS COMPLIANT

**FOR INFORMATION ONLY:
DO NOT MANUFACTURE
PARTS TO THIS DRAWING**



SECTION A-A

SPECIFICATIONS SUBJECT TO CHANGE WITHOUT NOTICE
DIMENSIONS ARE FOR REFERENCE ONLY

| | S1 | S2 |
|------------------------|----------------------|----------------------|
| SHAPE | CONVEX | PLANO |
| RADIUS | 200mm | N/A |
| SURFACE QUALITY | 60-40 | N/A |
| FOCAL LENGTH TOLERANCE | ±2% | N/A |
| BEVEL | PROTECTIVE AS NEEDED | PROTECTIVE AS NEEDED |

THIRD ANGLE
PROJECTION

ALL DIMS IN mm

Edmund Optics®

| | | | |
|--------|---|-----------------|--|
| TITLE | Ø25mm, -100mm FL PROTECTED GOLD, CONVEX MIRROR | | |
| DWG NO | 87691 | SHEET 1 OF 1 | |