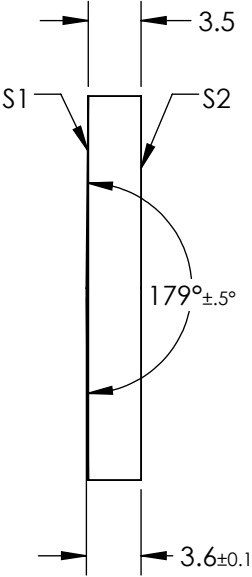
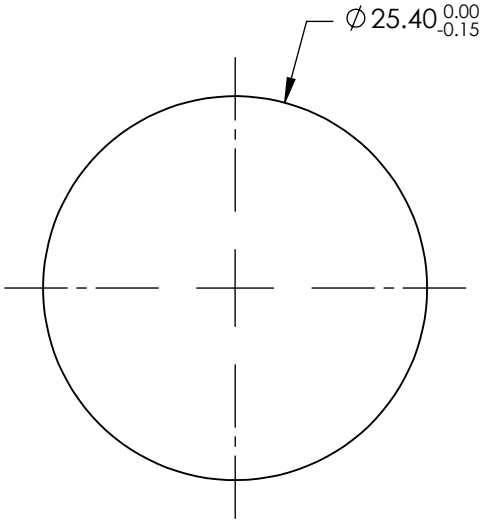


NOTES:

- 1. SUBSTRATE MATERIAL:  
FUSED SILICA
- 2. COATING (APPLY ACROSS CLEAR APERTURE)  
  
S1 & S2: VIS 0°  
R(AVG) ≤ 0.4% FROM 425-675nm @ 0° AOI
- 3. RoHS COMPLIANT



**FOR INFORMATION ONLY:  
DO NOT MANUFACTURE  
PARTS TO THIS DRAWING**

SPECIFICATIONS SUBJECT TO CHANGE WITHOUT NOTICE  
DIMENSIONS ARE FOR REFERENCE ONLY

REV. A	S1	S2
SHAPE	CONICAL	PLANO
SURFACE ACCURACY	λ/4	λ/4
SURFACE QUALITY	40-20	40-20
CLEAR APERTURE	>90	>90
BEVEL	PROTECTIVE AS NEEDED	PROTECTIVE AS NEEDED

THIRD ANGLE  
PROJECTION

ALL DIMS IN

mm

Edmund Optics®

TITLE

179° APEX ANGLE, Ø25.4mm, VIS 0°  
AXICON

DWG NO

36671

SHEET  
1 OF 1