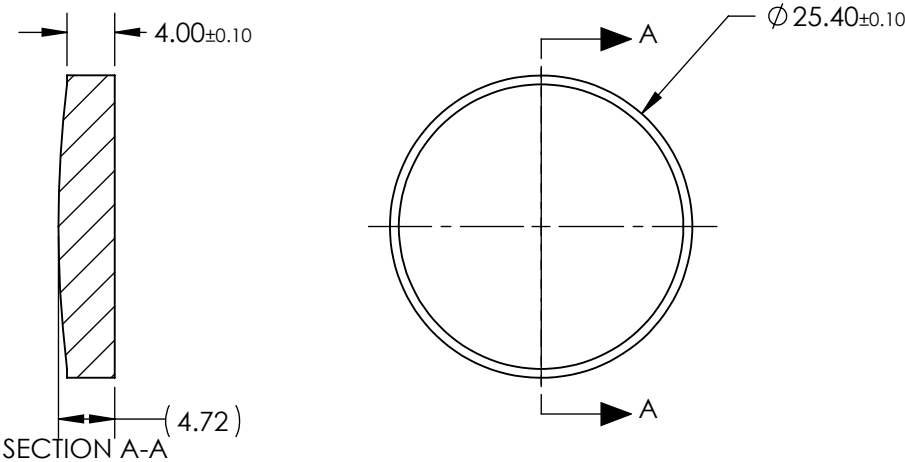
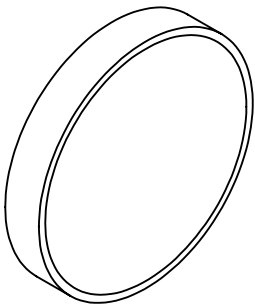


NOTES:


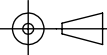
- 1. SUBSTRATE:  
PMMA
- 2. COATING  
S1 & S2: R(avg) <0.5% @ 450 - 650nm
- 3. FOCAL LENGTH TOLERANCE: ±1%



**FOR INFORMATION ONLY:  
DO NOT MANUFACTURE  
PARTS TO THIS DRAWING**

SPECIFICATIONS SUBJECT TO CHANGE WITHOUT NOTICE  
DIMENSIONS ARE FOR REFERENCE ONLY

	S1	S2
SHAPE	CONVEX	PLANO
BEVEL	PROTECTIVE AS NEEDED	PROTECTIVE AS NEEDED

EFL	203.00	 <b>Edmund Optics®</b>		
BFL	200.10			
THIRD ANGLE PROJECTION		TITLE	25.4mm DIA F/8 VIS COATED, MOLDED ACRYLIC ASPHERIC LENS	
ALL DIMS IN	mm	DWG NO	48186	SHEET 1 OF 1