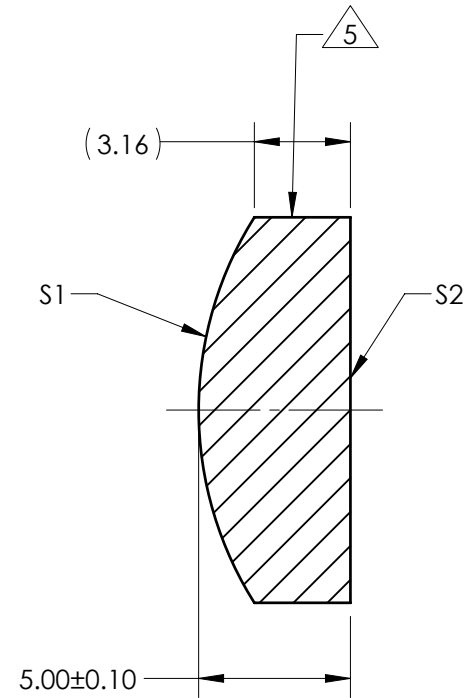
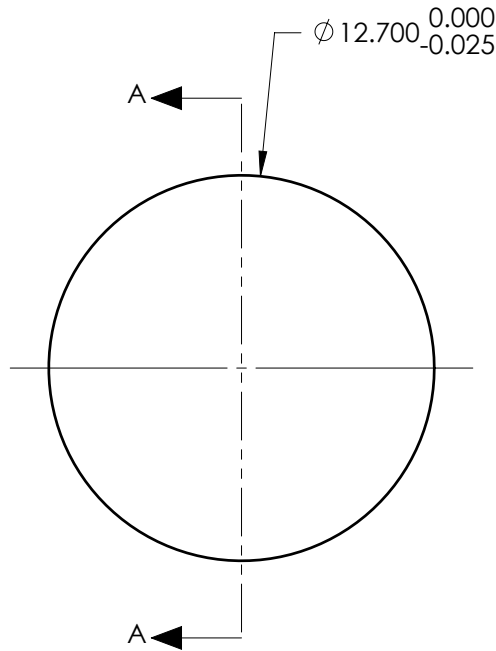


NOTES:

1. SUBSTRATE:  
Fused Silica 458/678
2. ROHS COMPLIANT
3. CENTERING TOLERANCE (AT 587.6nm):  
BEAM DEVIATION (HALF ANGLE): <1 ARCMIN
4. COATING (APPLY ACROSS COATING APERTURE)  
  
S1 & S2: 1064nm Laser AR Coating  
R(ABS) < 0.25% @ 1064nm @ 0° AOI  
  
DAMAGE THRESHOLD  
PULSED: 15J/cm² @ 20ns, 20Hz @ 1064nm

 FINE GRIND SURFACE

6. POWER, IRREGULARITY, AND SURFACE QUALITY  
SPECIFICATIONS APPLY ACROSS CLEAR APERTURE
7. FOCAL LENGTH (EFL): 25.00mm±1%  
BACK FOCAL LENGTH (BFL): 21.62mm
8. PROTECTIVE BEVEL AS NEEDED
9. DESIGN WAVELENGTH: 355nm



SECTION A-A

***FOR INFORMATION ONLY:***  
**DO NOT MANUFACTURE  
PARTS TO THIS DRAWING**

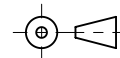
|                         | S1         | S2         |
|-------------------------|------------|------------|
| SHAPE                   | CONVEX     | PLANO      |
| RADIUS                  | 11.90      | INFINITY   |
| SURFACE QUALITY         | 10 - 5     | 10 - 5     |
| MIN CLEAR APERTURE      | Ø 11.70    | Ø 11.70    |
| MIN COATING APERTURE    | Ø 11.70    | Ø 11.70    |
| POWER AT 632.8nm        | 2.00 RINGS | 2.00 RINGS |
| IRREGULARITY AT 632.8nm | 0.20 RINGS | 0.20 RINGS |

SPECIFICATIONS SUBJECT TO CHANGE WITHOUT NOTICE  
DIMENSIONS ARE FOR REFERENCE ONLY

 **Edmund Optics®**

12.7mm Dia x 25mm FL, 1064nm Laser AR  
Coating, 15J Coated, Plano-Convex  
Lens

THIRD ANGLE  
PROJECTION



ALL DIMS IN

mm

TITLE

DWG NO

38733

SHEET  
1 OF 1