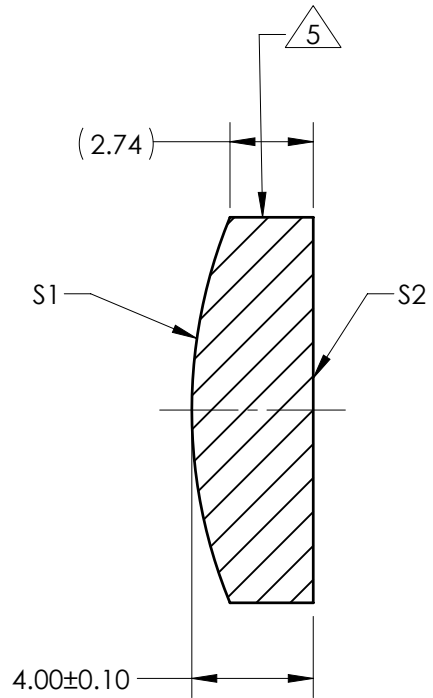
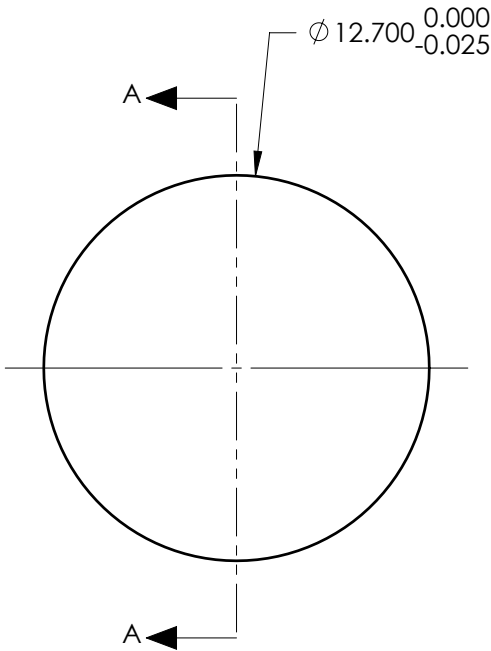


NOTES:

1. SUBSTRATE:  
Fused Silica 458/678
2. ROHS COMPLIANT
3. CENTERING TOLERANCE (AT 587.6nm):  
BEAM DEVIATION (HALF ANGLE): <1 ARCMIN
4. COATING (APPLY ACROSS COATING APERTURE)  
  
S1 & S2: 1064nm Laser AR Coating  
R(ABS) < 0.25% @ 1064nm @ 0° AOI  
  
DAMAGE THRESHOLD  
PULSED: 15J/cm<sup>2</sup> @ 20ns, 20Hz @ 1064nm

 FINE GRIND SURFACE

6. POWER, IRREGULARITY, AND SURFACE QUALITY SPECIFICATIONS APPLY ACROSS CLEAR APERTURE
7. FOCAL LENGTH (EFL): 35.00mm±1%  
BACK FOCAL LENGTH (BFL): 32.30mm
8. PROTECTIVE BEVEL AS NEEDED
9. DESIGN WAVELENGTH: 355nm



SECTION A-A

***FOR INFORMATION ONLY:***  
**DO NOT MANUFACTURE**  
**PARTS TO THIS DRAWING**

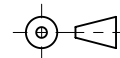
	S1	S2
SHAPE	CONVEX	PLANO
RADIUS	16.66	INFINITY
SURFACE QUALITY	10 - 5	10 - 5
MIN CLEAR APERTURE	Ø 11.70	Ø 11.70
MIN COATING APERTURE	Ø 11.70	Ø 11.70
POWER AT 632.8nm	2.00 RINGS	2.00 RINGS
IRREGULARITY AT 632.8nm	0.20 RINGS	0.20 RINGS

SPECIFICATIONS SUBJECT TO CHANGE WITHOUT NOTICE  
DIMENSIONS ARE FOR REFERENCE ONLY

 **Edmund Optics®**

12.7mm Dia x 35mm FL, 1064nm Laser AR  
Coating, 15J Coated, Plano-Convex  
Lens

THIRD ANGLE  
PROJECTION



ALL DIMS IN

mm

TITLE

DWG NO

38734

SHEET  
1 OF 1