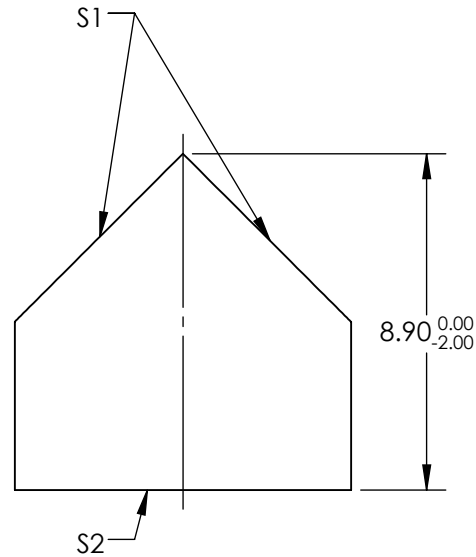
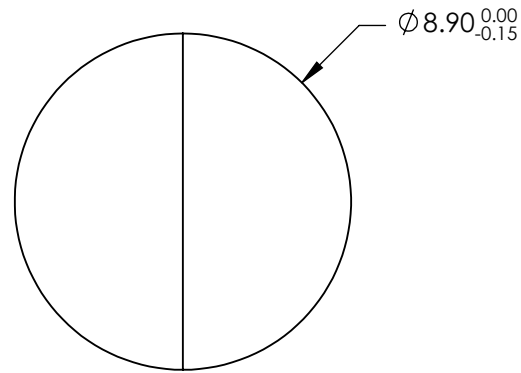
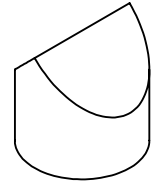


NOTES:

1. SUBSTRATE
N-SF6
2. COATING (APPLY ACROSS COATING APERTURE)
S1 & S2: BBAR @ 450 - 900nm
3. FAN ANGLE (°): 75
4. INDEX OF REFRACTION: 1.805
5. WAVELENGTH RANGE (nm): 450 - 900
6. ROHS: COMPLIANT



SPECIFICATIONS SUBJECT TO CHANGE WITHOUT NOTICE
DIMENSIONS ARE FOR REFERENCE ONLY

**FOR INFORMATION ONLY:
DO NOT MANUFACTURE
PARTS TO THIS DRAWING**

EO® Edmund Optics®

THIRD ANGLE PROJECTION 		TITLE	75° Full Fan Angle Laser Line Generator Lens	
ALL DIMS IN	mm	DWG NO	46634	SHEET 1 OF 1