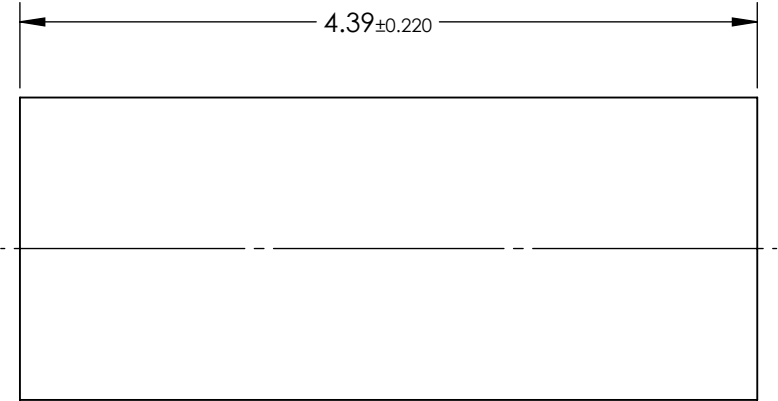
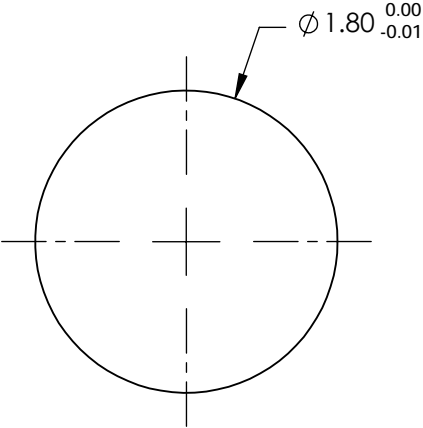


NOTES:


- 1. SUBSTRATE:
Alumoscilate Glass Embedded with Silver Ions
- 2. COATING (APPLY ACROSS COATING APERTURE)
S1 & S2: BBAR (1310-1550nm)
R(AVG) < 0.5% @ 1310 - 1550nm ±30nm
- 3. EFL: 1.73
- 4. f/# : 0.96
- 5. NUMERICAL APERTURE: 0.51
- 6. DESIGN WAVELENGTH: 1550nm
- 7. WORKING DISTANCE: 0mm
- 8. ROHS: COMPLIANT



**FOR INFORMATION ONLY:
DO NOT MANUFACTURE
PARTS TO THIS DRAWING**

SPECIFICATIONS SUBJECT TO CHANGE WITHOUT NOTICE
DIMENSIONS ARE FOR REFERENCE ONLY

EO® Edmund Optics®

| | | | | | | | |
|-----------------|-------|-------|--|----|--------|--|--|
| | S1 | S2 | <div>THIRD ANGLE PROJECTION</div>  | | TITLE | 1.8mm Dia, 1550nm DWL, 0.0mm WD, NIR Coated, GRIN Lens | |
| SHAPE | PLANO | PLANO | | | | | |
| SURFACE QUALITY | 40-20 | 40-20 | ALL DIMS IN | mm | DWG NO | 64549 | |
| CLEAR APERTURE | Ø1.62 | Ø1.62 | | | | | |
| | | | SHEET 1 OF 1 | | | | |