

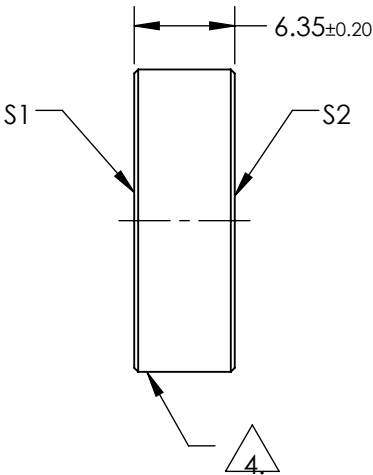
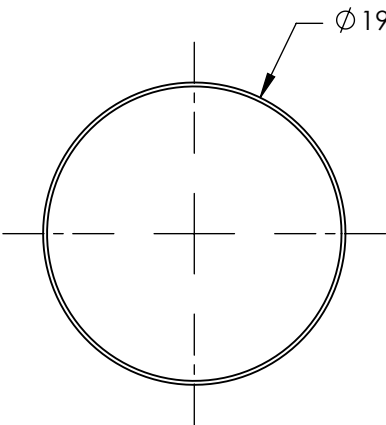
NOTES:

- 1. SUBSTRATE:  
FUSED SILICA
- 2. S2 TO BE PARALLEL TO S1 TO WITHIN <3ARCMIN
- 3. COATING (APPLY ACROSS COATING APERTURE)  
S1: SILVER  
R(AVG) >98% from 450-2000nm  
R(AVG) >98% from 2000-10000nm

S2: NONE

4. FINE GROUND SURFACE

- 5. CLEAR APERTURE AND COATING APERTURE ARE CENTERED ON SURFACE
- 6. SURFACE QUALITY SPECIFICATIONS APPLY ACROSS CLEAR APERTURE
- 7. ROHS: COMPLIANT




**FOR INFORMATION ONLY:  
DO NOT MANUFACTURE  
PARTS TO THIS DRAWING**

SPECIFICATIONS SUBJECT TO CHANGE WITHOUT NOTICE  
DIMENSIONS ARE FOR REFERENCE ONLY

	S1	S2
SHAPE	PLANO	PLANO
SURFACE QUALITY	20-10	COMMERCIAL POLISH
SURFACE FLATNESS	0.10 WAVE	N/A
CLEAR APERTURE	Ø17.19	N/A
COATING APERTURE	Ø18.10	N/A
BEVEL	PROTECTIVE AS NEEDED	PROTECTIVE AS NEEDED

THIRD ANGLE PROJECTION	
ALL DIMS IN	mm

 Edmund Optics®			
TITLE		MIRROR FS 1/10 WAVE SILV 19.1 DIA	
DWG NO		39201	SHEET 1 OF 1