

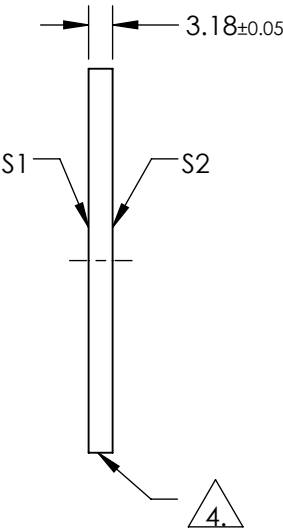
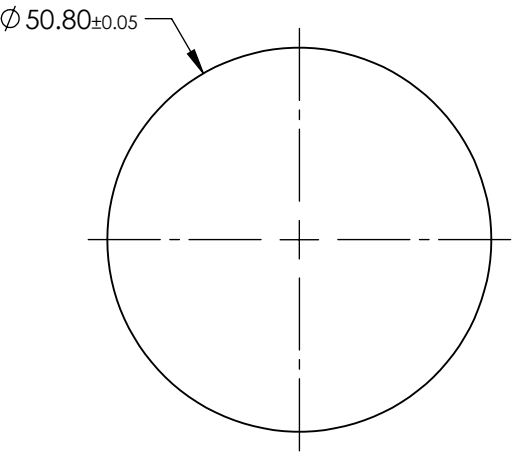
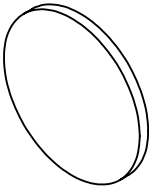
NOTES:

- 1. SUBSTRATE: OPTICAL GRADE SAPPHIRE (Al<sub>2</sub>O<sub>3</sub>)
- 2. SURFACE S2 TO BE PARALLEL TO SURFACE S1 TO WITHIN <3.5 ARCMIN
- 3. COATING (APPLY ACROSS COATING APERTURE):

S1 & S2: R(ABS) ≤ 1.25% from 750 - 800nm  
R(ABS) ≤ 1.0% from 800 - 1550nm  
R(AVG) ≤ 0.7% from 750 - 1550nm

4. GRIND SURFACE

5. RoHS: COMPLIANT



**FOR INFORMATION ONLY:  
DO NOT MANUFACTURE  
PARTS TO THIS DRAWING**

SPECIFICATIONS SUBJECT TO CHANGE WITHOUT NOTICE  
DIMENSIONS ARE FOR REFERENCE ONLY

	S1	S2
SHAPE	PLANO	PLANO
SURFACE QUALITY	80-50	80-50
SURFACE FLATNESS @ 632.8nm	2λ	2λ
SURFACE ROUGHNESS (μm/in)	0.1	0.1
BIREFRINGENCE	0.008	0.008
CLEAR APERTURE	Ø45.72	Ø45.72
BEVEL	PROTECTIVE AS NEEDED	PROTECTIVE AS NEEDED

**Edmund Optics®**

THIRD ANGLE PROJECTION	TITLE	Window Saph 50.8 Dia NIR II Ctd
ALL DIMS IN	DWG NO	39270
mm		SHEET 1 OF 1