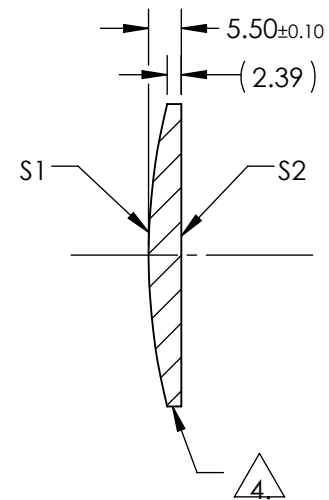
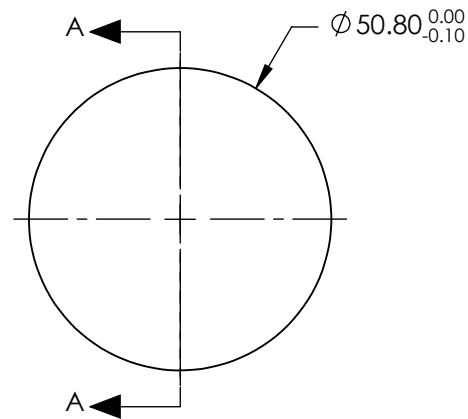


NOTES:


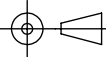
1. SUBSTRATE:
II-VI Infrared ZnSe
2. CENTERING TOLERANCE:
EDGE THICKNESS VARIATION MEASURED AT THE CLEAR APERTURE OF S1
NOT TO EXCEED 12.7 μ m
3. COATING (APPLY ACROSS COATING APERTURE)
BBAR (8000-12000nm)
S1 & S2: R(AVG) <0.5% @ 8 - 12 μ m
4. FINE GROUND SURFACE
5. POWER, IRREGULARITY, AND SURFACE QUALITY SPECIFICATIONS APPLY
ACROSS CLEAR APERTURE
6. WAVELENGTH RANGE: 3000 - 12000nm
7. SURFACE ROUGHNESS: <50 Å
8. ROHS: COMPLIANT



SECTION A-A

**FOR INFORMATION ONLY:
DO NOT MANUFACTURE
PARTS TO THIS DRAWING**

SPECIFICATIONS SUBJECT TO CHANGE WITHOUT NOTICE
DIMENSIONS ARE FOR REFERENCE ONLY

	S1	S2				
SHAPE	CONVEX	PLANO				
RADIUS	105.200	INFINITY	EFL (AT 10.6 microns)	75.00	 Edmund Optics®	
SURFACE QUALITY	40-20	40-20	BFL (AT 10.6 microns)	72.71		
CLEAR APERTURE	90%	90%	THIRD ANGLE PROJECTION 		TITLE	50.8mm Dia. x 75mm FL, 8-12 μ m BBAR Coated, ZnSe Plano-Convex Lens
POWER at 10.6 μ m	$\lambda/10$	$\lambda/10$			DWG NO	11409
IRREGULARITY at 10.6 μ m	$\lambda/20$	$\lambda/20$	ALL DIMS IN	mm		SHEET 1 OF 1
BEVEL	PROTECTIVE AS NEEDED	PROTECTIVE AS NEEDED				