

NOTES:

- 1. SUBSTRATE MATERIAL:
FUSED SILICA
- 2. SURFACE S2 TO BE PARALLEL TO SURFACE S1 <10 ARCSEC
- 3. COATING (APPLY ACROSS COATING APERTURE)
S1: ULTRAFAST LASER
Rs >98.5% @ 235 - 280nm @ 45° AOI
Rp >97.5% @ 241 - 271nm @ 45° AOI

S2: NONE

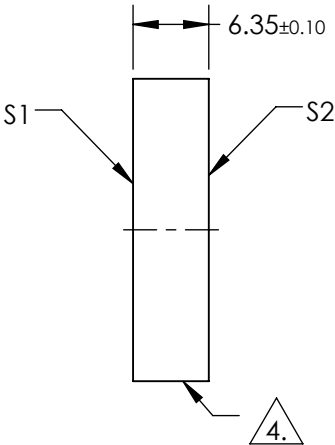
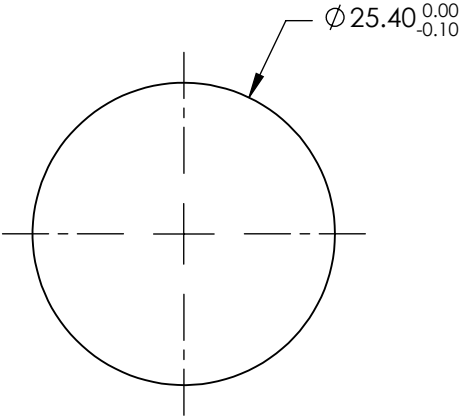
DAMAGE THRESHOLD,
PULSED: 0.26 J/cm² @ 258nm, 177fs FWHM, P-POLARIZATION, 1 PULSE (TYPICAL)
0.2 J/cm² @ 258nm, 177fs FWHM, 10kHz, P-POLARIZATION, 1000 PULSES (TYPICAL)

GROUP DELAY DISPERSION: 0 ±10fs² @ 241 - 271nm

4. FINE GROUND SURFACE

5. RoHS: COMPLIANT

**FOR INFORMATION ONLY:
DO NOT MANUFACTURE
PARTS TO THIS DRAWING**



SPECIFICATIONS SUBJECT TO CHANGE WITHOUT NOTICE
DIMENSIONS ARE FOR REFERENCE ONLY

	S1	S2
SHAPE	PLANO	PLANO
SURFACE FLATNESS	λ/10 OVER 15mm CA	N/A
SURFACE QUALITY	10-5	COMMERCIAL POLISH
CLEAR APERTURE (%)	>80	N/A
BEVEL	PROTECTIVE AS NEEDED	PROTECTIVE AS NEEDED

THIRD ANGLE PROJECTION	
ALL DIMS IN	mm

EO® Edmund Optics®

TITLE	266nm, 25.4mm Dia., Low GDD Ultrafast Mirror		
DWG NO	11735	SHEET 1 OF 1	