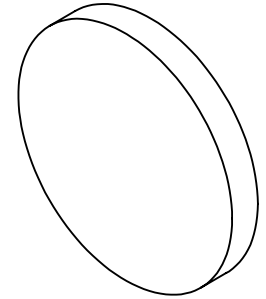
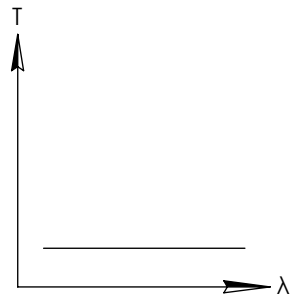
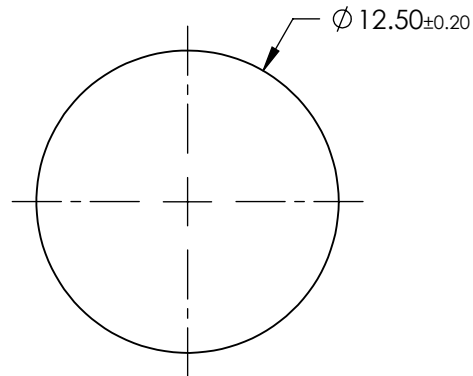


**FOR INFORMATION ONLY:
DO NOT MANUFACTURE
PARTS TO THIS DRAWING**

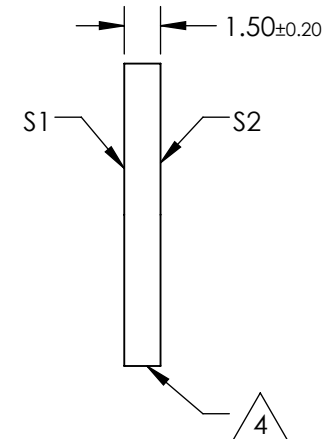


NOTES:

1. SUBSTRATE: GERMANIUM (Ge)
2. SURFACE S2 TO BE PARALLEL WITH SURFACE S1 TO WITHIN < 10 ARCMINS
3. COATING(APPLY ACROSS CLEAR APERTURE)
OPTICAL DENSITY = 0.9 @ 2 - 14μm
TRANSMISSION = 12% @ 2 - 14μm
4. FINE GROUND SURFACE
5. POWER, IRREGULARITY, AND SURFACE QUALITY SPECIFICATIONS APPLY ACROSS CLEAR APERTURE
6. ROHS COMPLIANT



IR NEUTRAL DENSITY FILTER



SPECIFICATIONS SUBJECT TO CHANGE WITHOUT NOTICE
DIMENSIONS ARE FOR REFERENCE ONLY

	S1	S2
SHAPE	PLANO	PLANO
SURFACE FLATNESS	3 - 5λ	3 - 5λ
SURFACE QUALITY	80-50	80-50
CLEAR APERTURE	Ø11.25	Ø11.25
BEVEL	PROTECTIVE AS NEEDED	PROTECTIVE AS NEEDED



ALL DIMS IN

mm



Edmund Optics®

TITLE

0.9 OD, 12.5mm DIA., IR NEUTRAL DENSITY
FILTER

DWG NO

12008

SHEET
1 OF 1