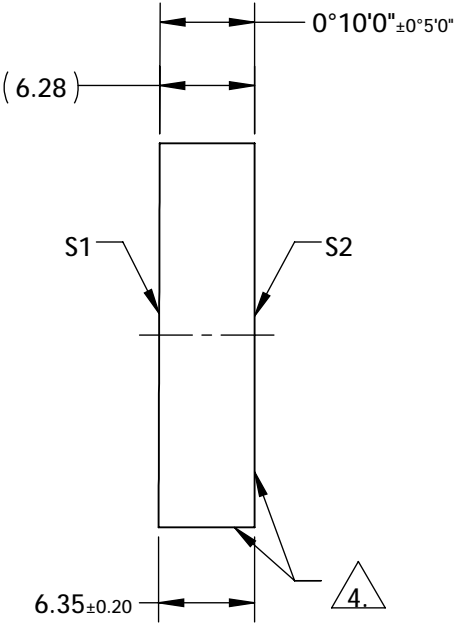
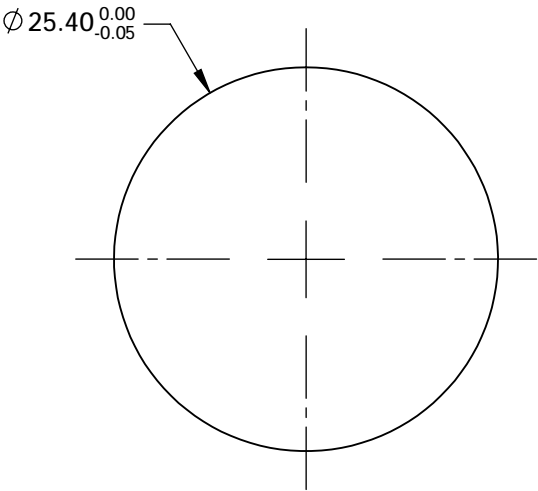
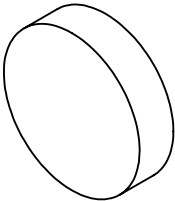


NOTES:

- 1. SUBSTRATE: FUSED SILICA
- 2. SURFACE S1 TO BE PARALLEL TO SURFACE S2 TO WITHIN < 10 ARCMIN
- 3. COATING (APPLY ACROSS COATING APERTURE)  
S1:R(AVG) > 99.8% @ 780 - 830nm @ 5° AOI (P-POLARIZATION)  
R(ABS) > 99.9% @ 800nm @5° AOI (TYPICAL, P-POLARIZATION)  
GDD = -1300 fs<sup>2</sup>  
  
S2: NONE  
  
DAMAGE THRESHOLD: 0.3 J/cm<sup>2</sup> @ 800nm, 50fs, 1kHz, 100µm BEAM DIAMETER

4. COMMERCIAL POLISHED SURFACE

5. RoHS: COMPLIANT



**FOR INFORMATION ONLY:  
DO NOT MANUFACTURE  
PARTS TO THIS DRAWING**

SPECIFICATIONS SUBJECT TO CHANGE WITHOUT NOTICE  
DIMENSIONS ARE FOR REFERENCE ONLY

	S1	S2
SHAPE	PLANO	PLANO
IRREGULARITY	λ/10	λ/10
CLEAR APERTURE	Ø20.32	Ø20.32
BEVEL	PROTECTIVE AS NEEDED	PROTECTIVE AS NEEDED



ALL DIMS IN mm

**Edmund Optics®**

TITLE 25.4mm 5°, 800nm Highly-Dispersive Ultrafast Mirror

DWG NO 12331

SHEET 1 OF 1