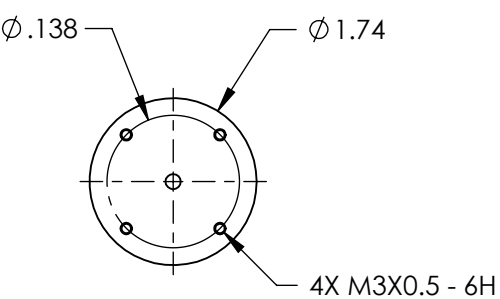
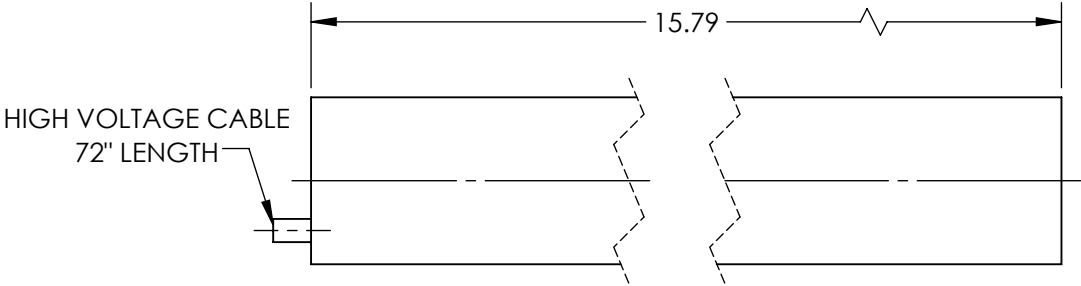


NOTES:
1. RoHS: EXEMPT

FOR INFORMATION ONLY:
DO NOT MANUFACTURE
PARTS TO THIS DRAWING



| | VALUE |
|--------------------------------------------|----------------------------------------------------------------------------------------|
| WEIGHT (lbs) | 1.3 |
| WARM-UP TIME | 10 |
| RMS NOISE | 30 Hz - 10 MHz: 0.2% |
| OPERATING TEMPERTURE (°C) | -40 to +70 |
| OPERATING HUMIDITY | 0 TO 100%, NON-CONDENSING |
| MODE PURITY (TEM00) | >95% |
| MINIMUM OUTPUT POWER, TEM00 (mW) | 7 |
| MAXIMUM DRIFT | MEAN POWER OVER 8 HRS: ± 2.5 |
| LONGITUDINAL MODE SPACING, NOMINAL (MHz) | 435 |
| LASER CLASS - CDRH | IIIb |
| COLOR | RED |
| POINTING STABILITY AFTER WARM UP (mrad/°C) | AFTER 15 MIN: <0.02 |
| POINTING STABILITY (mrad/°C) | FROM COLD START, 25°: <0.1 |
| OUTPUT POWER (mW) | 7 |
| BEAM DIAMETER (mm) | 0.81 |
| BEAM DIVERGENCE (mrad) | 1.00 ± 3 |
| POLARIZATION | 500:1 |
| STATIC ALIGNMENT | CENTERED TO OUTER CYLINDER: $\pm 0.01''$ PARALLEL TO OUTER CYLINDER: ± 1.0 MRAD |

SPECIFICATIONS SUBJECT TO CHANGE WITHOUT NOTICE
DIMENSIONS ARE FOR REFERENCE ONLY

EO® **Edmund Optics**®

| | | | | |
|------------------------|--|--------|-----------------------------------------------------------|--------------|
| THIRD ANGLE PROJECTION | | TITLE | Model 1137P, 7mW Linear Polarization, Lumentum HeNe Laser | |
| | | DWG NO | 62725 | SHEET 1 OF 1 |