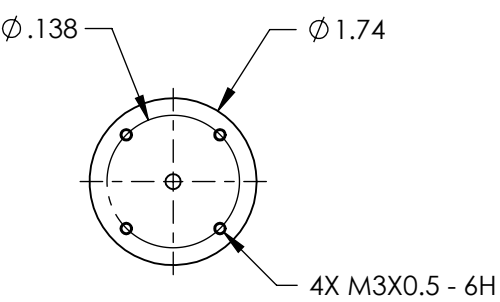
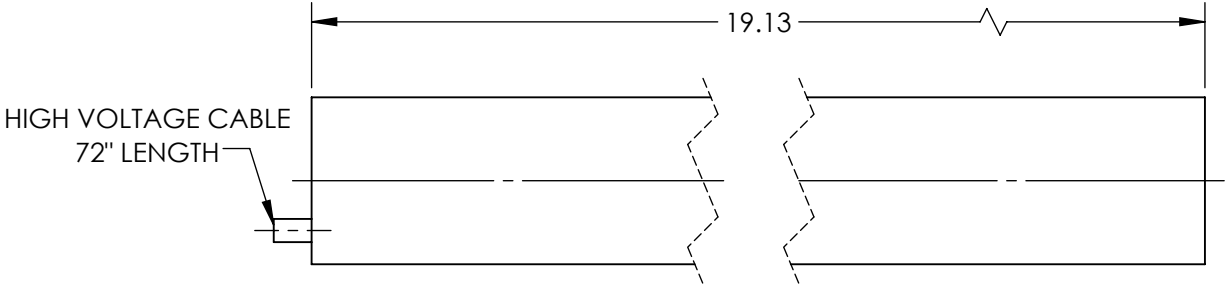


NOTES:  
1. RoHS: EXEMPT

**FOR INFORMATION ONLY:**  
**DO NOT MANUFACTURE**  
**PARTS TO THIS DRAWING**



	VALUE
WEIGHT (lbs)	1.5
WARM-UP TIME	15
RMS NOISE	30 Hz - 10 MHz: 0.1%
OPERATING TEMPERTURE (°C)	-40 to +70
OPERATING HUMIDITY	0 TO 100%, NON-CONDENSING
MODE PURITY (TEM00)	>95%
MINIMUM OUTPUT POWER, TEM00 (mW)	10
MAXIMUM DRIFT	MEAN POWER OVER 8 HRS: $\pm 3$
LONGITUDINAL MODE SPACING, NOMINAL (MHz)	320
LASER CLASS - CDRH	IIIb
COLOR	RED
POINTING STABILITY AFTER WARM UP (mrad/°C)	AFTER 15 MIN: <0.02
POINTING STABILITY (mrad/°C)	FROM COLD START, 25°: <0.1
OUTPUT POWER (mW)	10
BEAM DIAMETER (mm)	0.68
BEAM DIVERGENCE (mrad)	$1.20 \pm 3$
POLARIZATION	RANDOM
STATIC ALIGNMENT	CENTERED TO OUTER CYLINDER: $\pm 0.01"$ PARALLEL TO OUTER CYLINDER: $\pm 1.0$ MRAD

SPECIFICATIONS SUBJECT TO CHANGE WITHOUT NOTICE  
DIMENSIONS ARE FOR REFERENCE ONLY

**EO**® **Edmund Optics**®

THIRD ANGLE PROJECTION		TITLE	Model 1135, 10mW Random Polarization, Lumentum HeNe Laser		
		DWG NO	62726	SHEET	1 OF 1