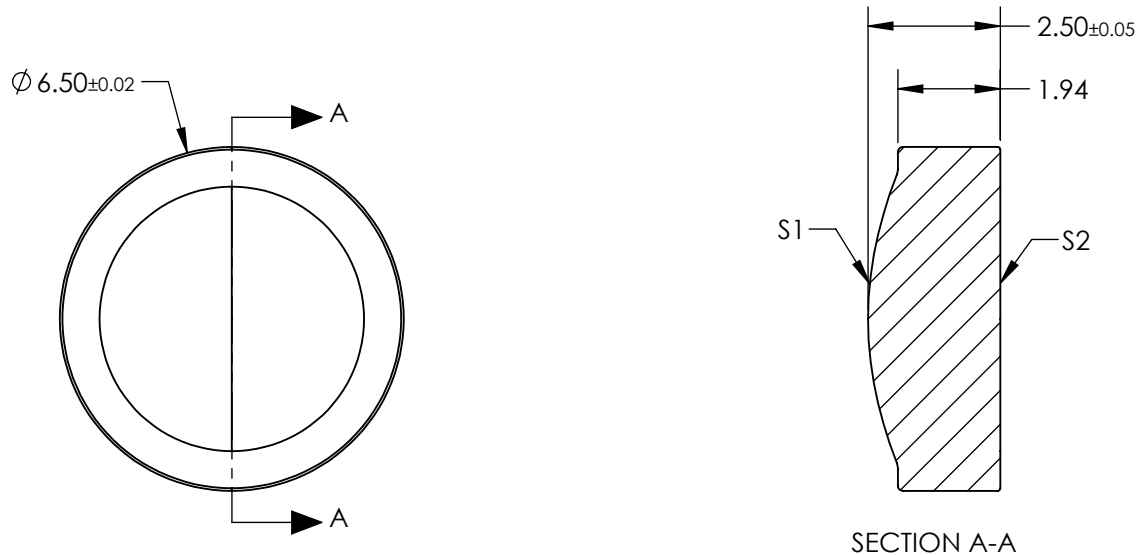


- NOTES:
- 1. SUBSTRATE:
BLACK DIAMOND™ BD-2 (Ge28Sb12Se60)
 - 2. NUMERICAL APERTURE: 0.56
 - 3. COATING:
R(AVG) <1.0% @ 1.8 - 3.0µm
 - 4. FOCAL LENGTH TOLERANCE: ±1%
 - 5. RoHS: COMPLIANT

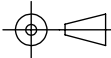


**FOR INFORMATION ONLY:
DO NOT MANUFACTURE
PARTS TO THIS DRAWING**

SPECIFICATIONS SUBJECT TO CHANGE WITHOUT NOTICE
DIMENSIONS ARE FOR REFERENCE ONLY

	S1	S2
SHAPE	CONVEX	PLANO
SURFACE QUALITY	80-50	80-50
MIN CLEAR APERTURE	Ø5	Ø5
BEVEL MAX FACE	PROTECTIVE AS NEEDED	PROTECTIVE AS NEEDED

THIRD ANGLE
PROJECTION



ALL DIMS IN

mm



Edmund Optics®

TITLE

Infrared Asphere 0.56NA, 4.0mm FL, 1.8-3.0µm
AR Coated

DWG NO

66560

SHEET
1 OF 1