

1. SUBSTRATE:
FUSED SILICA

3. COATING (APPLY ACROSS COATING APERTURE):

S1: NONE

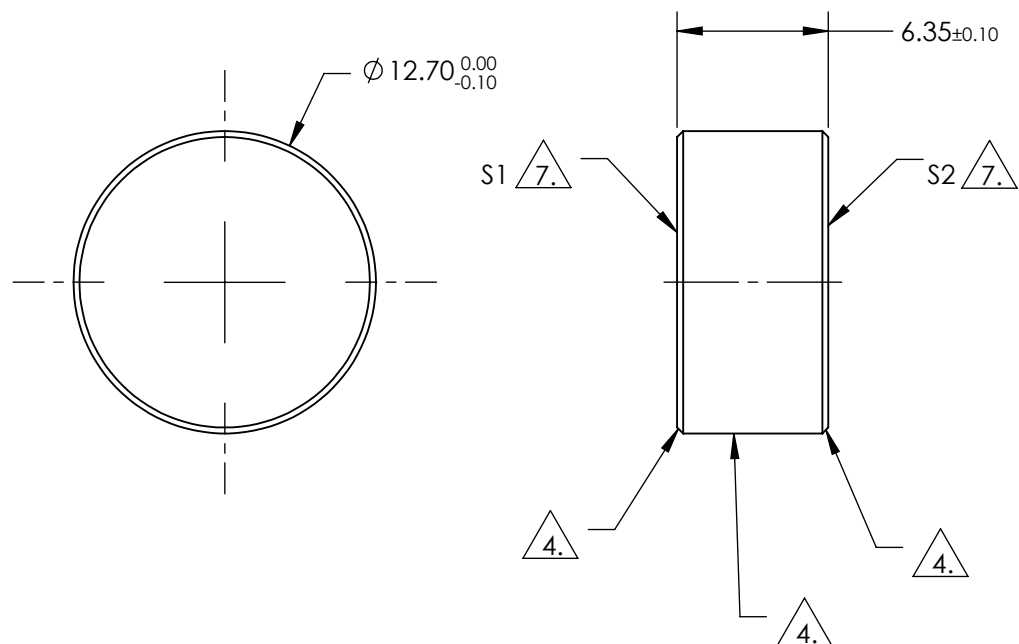
S2: NONE

4. COMMERCIAL POLISH

5. SURFACE QUALITY SPECIFICATIONS APPLY ACROSS CLEAR APERTURE.



6. CLEAR APERTURE AND COATING APERTURE ARE CENTERED ON SURFACES.

7. SURFACE ROUGHNESS S1 & S2: $\leq 1 \text{ \AA RMS}$



**FOR INFORMATION ONLY:
DO NOT MANUFACTURE
PARTS TO THIS DRAWING**

SPECIFICATIONS SUBJECT TO CHANGE WITHOUT NOTICE
DIMENSIONS ARE FOR REFERENCE ONLY

	S1	S2	<div><div></div><div>Edmund Optics®</div></div>					
SHAPE	PLANO	PLANO	<div>THIRD ANGLE PROJECTION</div> 			TITLE	12.7mm Dia., 6.35mm Thick, Superpolished Laser Window Substrate	
SURFACE FLATNESS	λ/10	λ/10				DWG NO	11554	SHEET 1 OF 1
SURFACE ACCURACY AT 632.8nm (P-V)	0.05 WAVE	0.05 WAVE						
SURFACE QUALITY	10-5	10-5						
CLEAR APERTURE	Ø11.43	Ø11.43						
BEVEL	PROTECTIVE AS NEEDED	PROTECTIVE AS NEEDED	ALL DIMS IN	mm				