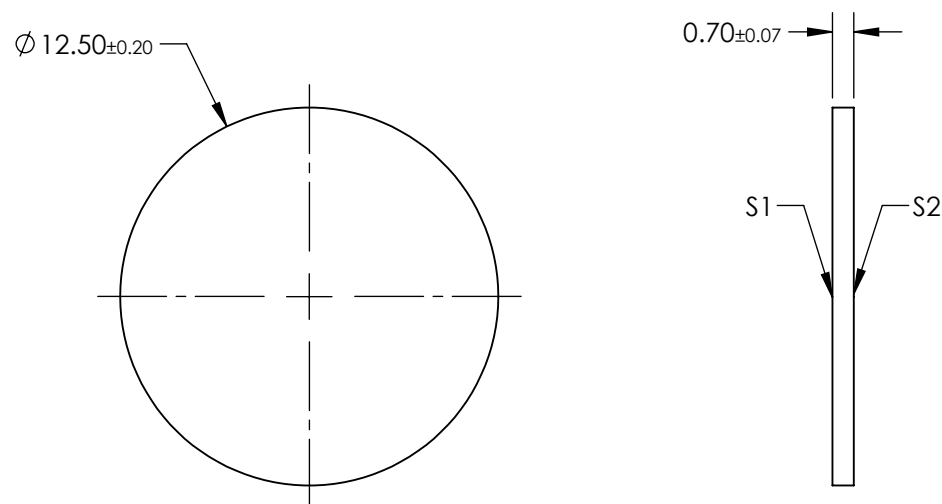



1. SUBSTRATE: CORNING EAGLE XG
2. COATING (APPLY ACROSS COATING APERTURE)
S1 & S2: BBAR (400-700nm)
R(AVG) <1% @ 400 - 700nm
3. EXTINCTION RATIO:
348:1 @ 450nm
885:1 @ 550nm
1229:1 @ 650nm
4. WAVELENGTH RANGE: 420 - 700nm
5. OPERATING TEMPERATURE: -40 TO +200°C
6. THERMAL EXPANSION: $31.7 \times 10^{-7}/^{\circ}\text{C}$
7. TRANSMISSION: 87 ± 2.5 @ 420 - 700nm
8. ALIGNMENT TOLERANCE: ± 1.0
9. CONSTRUCTION: WIRE GRID
10. ROHS: COMPLIANT
11. WHEN THE REFERENCE MARK IS ORIENTATED TO THE 3 OR 9 O'CLOCK POSITION, THE TRANSMISSION AXIS RUNS LEFT TO RIGHT.



**FOR INFORMATION ONLY:
DO NOT MANUFACTURE
PARTS TO THIS DRAWING**

SPECIFICATIONS SUBJECT TO CHANGE WITHOUT NOTICE
DIMENSIONS ARE FOR REFERENCE ONLY



	S1	S2	 THIRD ANGLE PROJECTION		TITLE	12.5mm Dia., PROTECTIVE OVERCOAT WIRE GRID POLARIZER	
SHAPE	PLANO	PLANO			DWG NO	12648	SHEET 1 OF 1
SURFACE QUALITY	80-50	80-50			ALL DIMS IN	mm	
BEVEL	PROTECTIVE AS NEEDED	PROTECTIVE AS NEEDED					