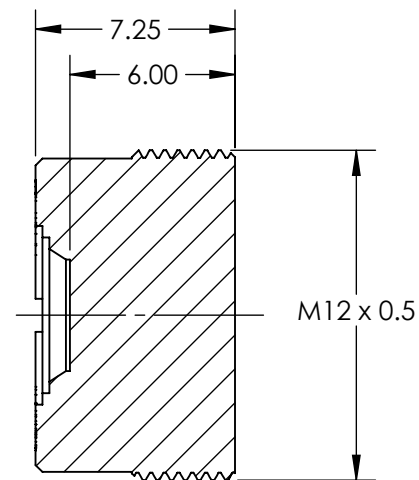
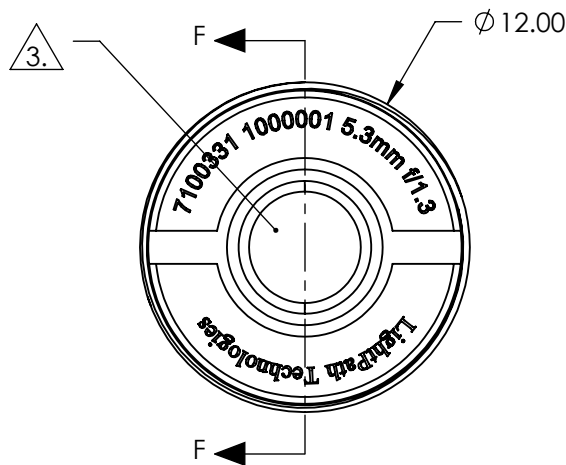


NOTES:

- 1. MATERIAL:
HOUSING: BLACK ANODIZED ALUMINUM
LENS: BLACK DIAMOND BD-6
- 2. COATING (APPLY ACROSS COATING APERTURE)
BBAR (8000 - 12000nm)
R(AVG) < 0.75% @ 8000 - 12000nm

3. CLEAR APERTURE: 4.28mm

- 4. RoHS: COMPLIANT



SECTION F-F

SPECIFICATIONS SUBJECT TO CHANGE WITHOUT NOTICE
DIMENSIONS ARE FOR REFERENCE ONLY

**FOR INFORMATION ONLY:
DO NOT MANUFACTURE
PARTS TO THIS DRAWING**

Edmund Optics®

THIRD ANGLE PROJECTION		TITLE	LIGHTPATH 7100331 5.3mm FL, f/1.3, THERMAL IMAGING LENS ASSEMBLY	
ALL DIMS IN	mm	DWG NO	15686	SHEET 1 OF 1