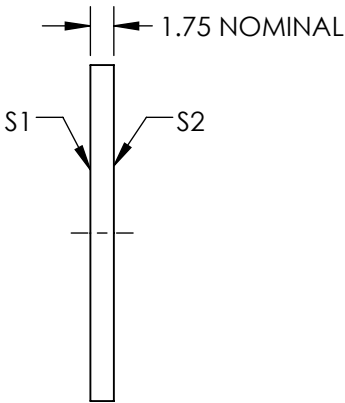
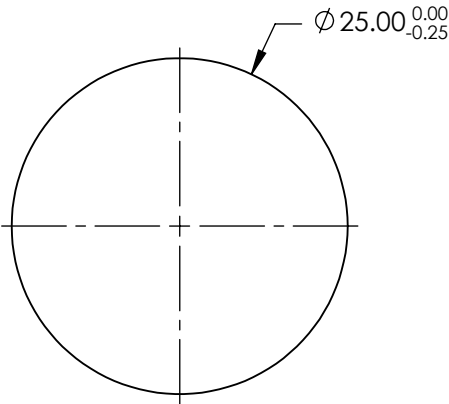
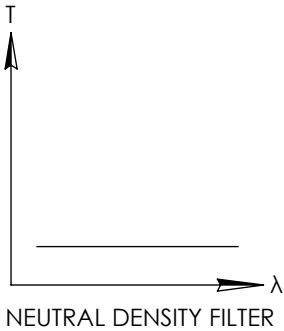


NOTES:


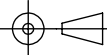
1. SUBSTRATE:  
SCHOTT NG4
2. SURFACE S2 TO BE PARALLEL WITH SURFACE S1 TO WITHIN <30 ARCSEC
3. COATING(APPLY ACROSS CLEAR APERTURE)  
S1 & S2: R(AVG)  $\leq 1.0\%$  @ 450 - 700nm @ 0°
4. OD:  $0.9 \pm 10\%$  @ 550nm
5. POWER, IRREGULARITY, AND SURFACE QUALITY SPECIFICATIONS APPLY ACROSS CLEAR APERTURE
6. TRANSMITTED WAVEFRONT DISTORTION P-V @ 632.8:  $\lambda/4$
7. ROHS COMPLIANT

**FOR INFORMATION ONLY:  
DO NOT MANUFACTURE  
PARTS TO THIS DRAWING**



SPECIFICATIONS SUBJECT TO CHANGE WITHOUT NOTICE  
DIMENSIONS ARE FOR REFERENCE ONLY

	S1	S2
SHAPE	PLANO	PLANO
SURFACE QUALITY	80-50	80-50
CLEAR APERTURE	$\varnothing 22.50$	$\varnothing 22.50$
BEVEL	PROTECTIVE AS NEEDED	PROTECTIVE AS NEEDED

 <b>Edmund Optics®</b>			
THIRD ANGLE PROJECTION 		TITLE	0.9 OD, 25mm Dia., Precision Anti-Reflection Coated Absorptive Neutral Density Filter
ALL DIMS IN	mm	DWG NO	16063
			SHEET 1 OF 1