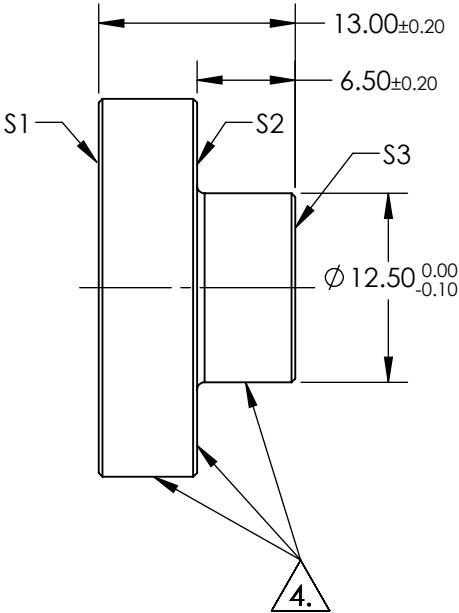
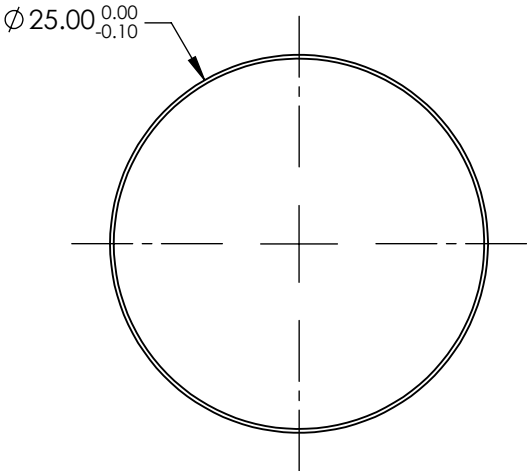


NOTES:


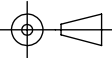
- 1. SUBSTRATE: FUSED SILICA
- 2. RoHS: COMPLIANT
- 3. COATING (APPLY ACROSS COATING APERTURE)
S1: R(AVG) >95% @ 450 - 650nm
S2 & S3: NONE

4. FINE GRIND SURFACE



FOR INFORMATION ONLY:
DO NOT MANUFACTURE
PARTS TO THIS DRAWING

SPECIFICATIONS SUBJECT TO CHANGE WITHOUT NOTICE
DIMENSIONS ARE FOR REFERENCE ONLY

	S1	S2	S3	 Edmund Optics®			
SHAPE	PLANO	PLANO	PLANO		TITLE		
SURFACE QUALITY	20-10	FINE GRIND	COMMERCIAL POLISH		25mm DIA., ENHANCED ALUMINUM, λ/10 STEMMED MIRROR		
CLEAR APERTURE	Ø22.50	N/A	N/A		DWG NO		
BEVEL	PROTECTIVE AS NEEDED	PROTECTIVE AS NEEDED	PROTECTIVE AS NEEDED	ALL DIMS IN	mm	14579	SHEET 1 OF 1