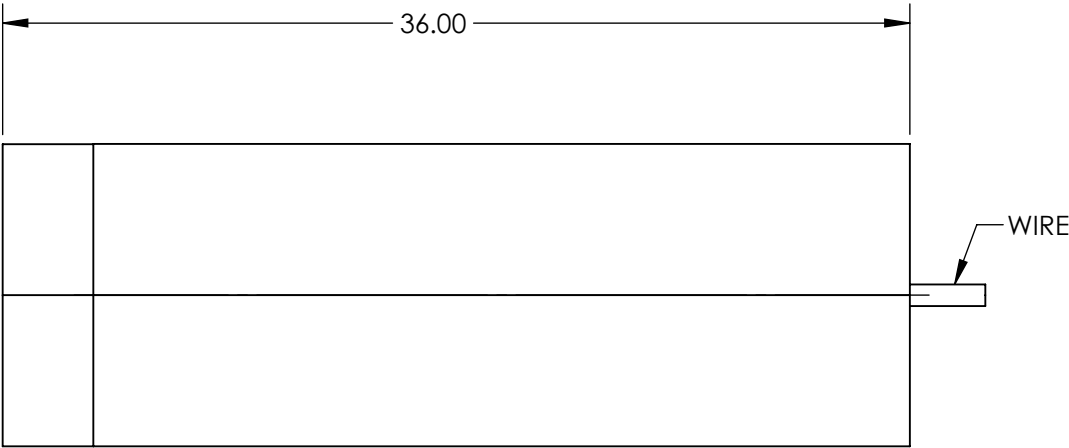
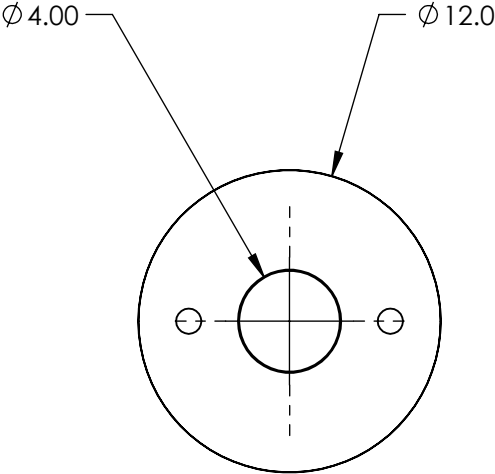
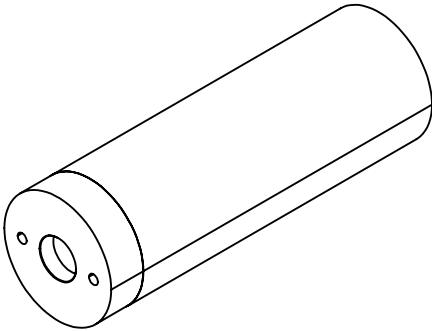


NOTES:

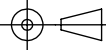
- 1. LASER CLASS:  
IIIb
- 2. BEAM DIAMETER(mm): 2 x 4 typical  
BEAM DIVERGENCE: <5.0mrad
- 3. MODULATION FREQUENCY: 0 - 10kHz
- 4. OPERATING TEMPERATURE: -10 to 50 °C  
OPERATING VOLTAGE: 5V
- 5. OUTPUT POWER: 25mW
- 6. WAVELENGTH RANGE: 808±5 nm



SPECIFICATIONS SUBJECT TO CHANGE WITHOUT NOTICE  
DIMENSIONS ARE FOR REFERENCE ONLY

**FOR INFORMATION ONLY:  
DO NOT MANUFACTURE  
PARTS TO THIS DRAWING**

**EO<sup>®</sup> Edmund Optics<sup>®</sup>**

THIRD ANGLE PROJECTION 		TITLE	25mW, 808nm Alignment Laser Diode	
ALL DIMS IN	mm	DWG NO	19452	SHEET 1 OF 1