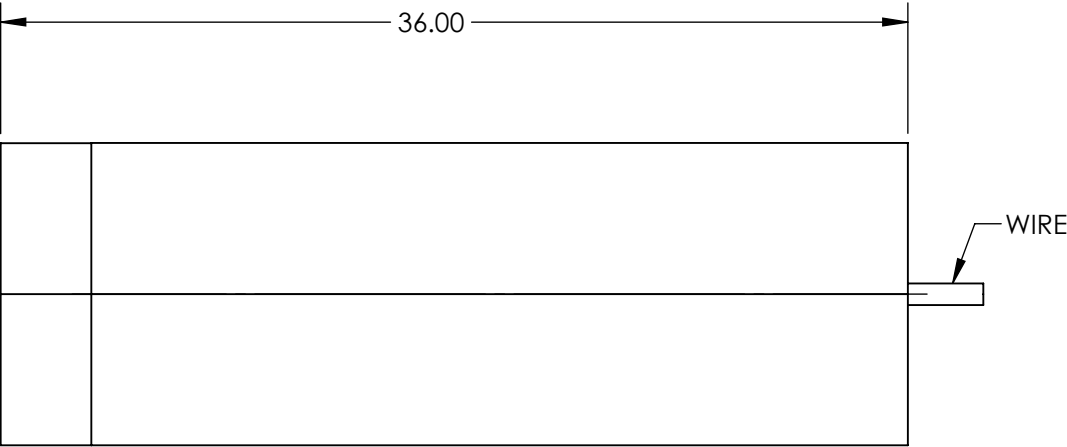
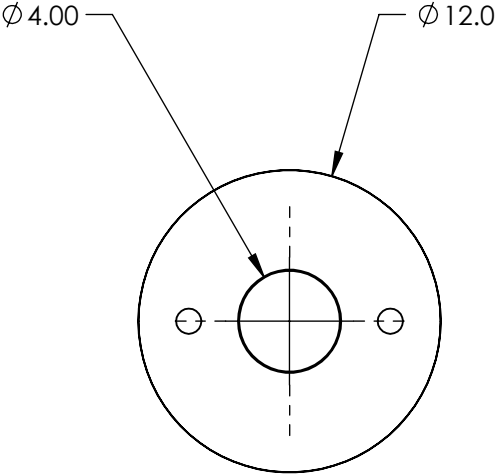
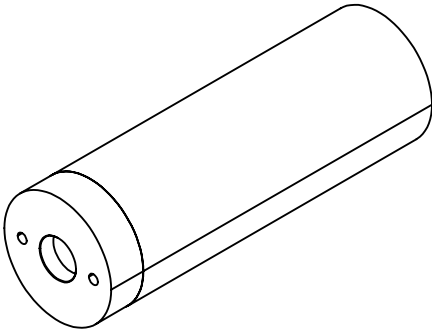


NOTES:

- 1. LASER CLASS:
IIIb
- 2. BEAM DIAMETER(mm): 3.5 typical
BEAM DIVERGENCE: <1.0mrad
- 3. MODULATION FREQUENCY: 0 - 10kHz
- 4. OPERATING TEMPERATURE: -10 to 50 °C
OPERATING VOLTAGE: 6V
- 5. OUTPUT POWER: 100mW
- 6. WAVELENGTH RANGE: 405±5 nm



SPECIFICATIONS SUBJECT TO CHANGE WITHOUT NOTICE
DIMENSIONS ARE FOR REFERENCE ONLY

**FOR INFORMATION ONLY:
DO NOT MANUFACTURE
PARTS TO THIS DRAWING**

EO[®] Edmund Optics[®]

THIRD ANGLE PROJECTION		TITLE	100mW, 405nm Violet Alignment Laser Diode Module	
ALL DIMS IN	mm	DWG NO	19462	SHEET 1 OF 1