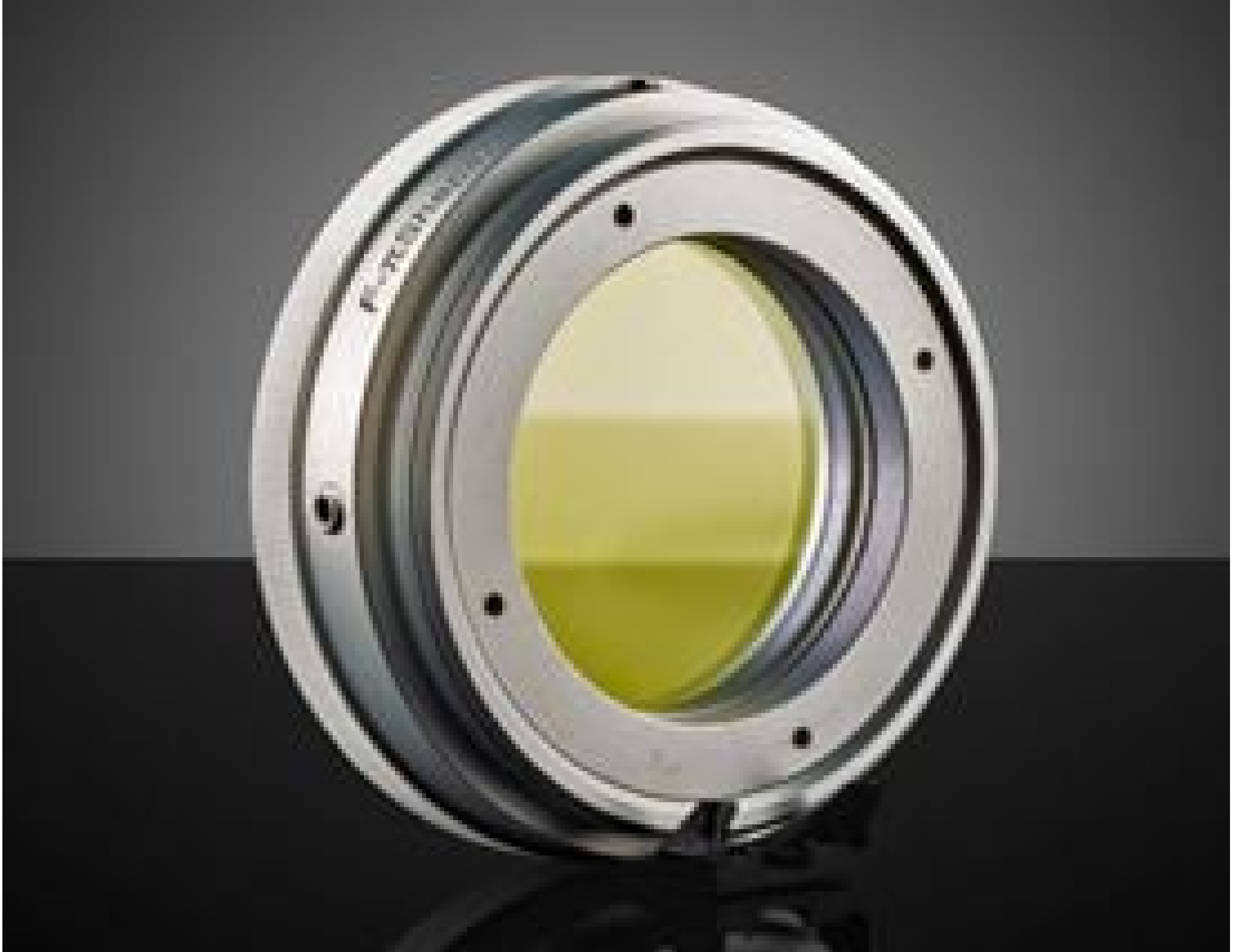


[See all 32 Products in Family](#)

1064nm, 18-23mm Dia. Input Beam, Focal Flat Top Beam Shaper | Focal πShaper_1064_Q-20

See More by [AdiOptica](#)



Focal Flat Top Beam Shaper



Stock #12-237 **1 In Stock**

A\$5,055⁰⁰

ADD TO CART

Volume Pricing	
Qty 1-4	A\$5,055.00 each
Qty 5-10	A\$4,544.00 each
Qty 11+	A\$4,299.00 each
Need More?	Request Quote

Product Downloads

General

πShaper_1064_Q-20

Model Number:

Type:

Compatible Adapter:

[#12-323](#)**Physical & Mechanical Properties**

Length (mm):

21.00

Weight (g):

70

Clear Aperture CA (mm):

38

Diameter (mm):

64.00

Input Beam Diameter, $1/e^2$ (mm):

18 - 23

Optical Properties

Transmission (%):

>99

Design Wavelength DWL (nm):

1064

Wavelength Range (nm):

1020 - 1100

Input Beam Mode:

TEM₀₀Typical Input Beam Mode Quality, M²:

<1.5

Input Beam Divergence (mrad):

±20

Electrical

Maximum Input Power, CW (kW):

0.4

Threading & Mounting

Inner Thread:

M58 x 1

Outer Thread:

M58 x 1

Regulatory Compliance

RoHS 2015:

[Compliant](#)

Certificate of Conformance:

[View](#)

Reach 250:

[Compliant](#)**Product Details**

- Shapes Gaussian Beams to Airy Disk Profile
- Airy Disk is Focusable to Flat Top Spot
- Near 100% Efficiency
- [AdlOptica πShaper Flat Top Beam Shapers](#) Also Available

AdlOptica Focal-πShaper (piShaper) Q Flat Top Beam Shapers are used to transform Gaussian beams to flat-top profiles after focusing through a lens. This is accomplished by transforming the Gaussian beam to airy disk profiles immediately after the piShaper. These beam shapers feature a compact design with inner and outer threading, making them easy to integrate into equipment. AdlOptica Focal-πShapers are advantageous for beam shaping in micromachining applications, including scribing and PCB drilling, as well as micro-welding applications. Multiple models are available at Nd:YAG, Ti:Sapphire, and Infrared wavelengths with compatible input beam diameters as small as 2.5mm and up to 23mm.

Technical Information

