

TECHSPEC® 116mm Dia x 1524.7mm FL Achromatic Lens, Mtd



Stock #54-568 **3 In Stock**

⊖ 1 ⊕ A\$2,384⁰⁰

ADD TO CART

| Volume Pricing | |
|----------------|-------------------------------|
| Qty 1-5 | A\$2,384.00 each |
| Qty 6-25 | A\$2,024.00 each |
| Qty 26-49 | A\$1,904.00 each |
| Need More? | Request Quote |

Product Downloads

General

Achromatic Lens **Type:**

Physical & Mechanical Properties

116.00 +0.00/-0.12 **Diameter (mm):**

98.00 **Clear Aperture CA (mm):**

| | |
|---------------------------|------------------------------------|
| 5.00 | Centering (arcmin): |
| 12.37 | Center Thickness CT 1 (mm): |
| 8.76 | Center Thickness CT 2 (mm): |
| -2169.77 | Radius R₄ (mm): |
| 23.35 | Edge Thickness ET (mm): |
| Mounted, Airspaced 0.10mm | Construction: |
| Protective as needed | Bevel: |

Optical Properties

| | |
|--|--|
| 1,524.73 | Effective Focal Length EFL (mm): |
| ±1 | Focal Length Tolerance (%): |
| 1514.53 | Back Focal Length BFL (mm): |
| 587.6 | Focal Length Specification Wavelength (nm): |
| 908.13 | Radius R₁ (mm): |
| -626.59 | Radius R₂ (mm): |
| -625.40 | Radius R₃ (mm): |
| N-BK7 / N-SF2 | Substrate: <input type="checkbox"/> |
| 60-40 | Surface Quality: |
| 14.9 | f#: |
| 0.03 | Numerical Aperture NA: |
| MgF ₂ (400-700nm) | Coating: |
| R _{avg} ≤ 1.75% @ 400 - 700nm | Coating Specification: |
| 400 - 700 | Wavelength Range (nm): |

Threading & Mounting

| | |
|------------|------------------------------|
| 28.35 | Mount Thickness (mm): |
| M112 x 1.0 | Mounting Threads: |

Regulatory Compliance

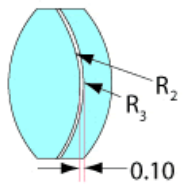
| | |
|----------------------|------------------------------------|
| View | Certificate of Conformance: |
|----------------------|------------------------------------|

Product Details

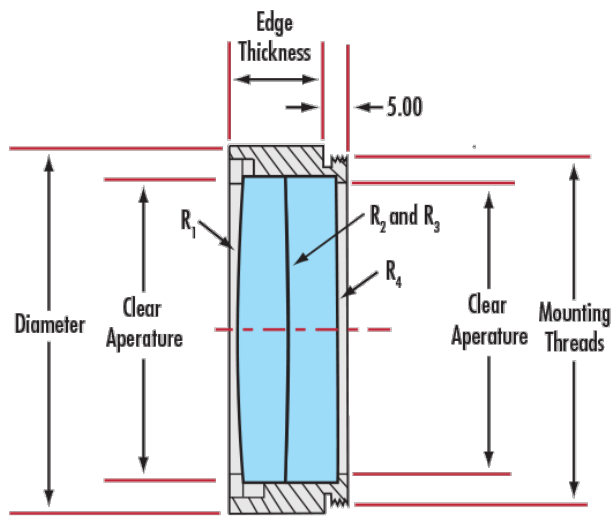
- Offered in Cemented or Air-Spaced Designs
- Mounted Versions Available for Easy Integration
- Feature MgF₂ Anti-Reflection Coating

TECHSPEC® Large Precision Achromatic Lenses offer near-diffraction limited performance across the designated wavelength range. These color-corrected achromatic lenses feature long focal lengths and are available in either cemented or air-spaced designs. The lenses have a MgF₂ anti-reflection coating and are available in diameters up to 140mm. TECHSPEC® Large Precision Achromatic Lenses, in the mounted version, feature a male mounting thread for easy integration into optical systems. Adhesive foil spacers and mounting instructions are included for unmounted, air-spaced achromatic lenses.

Technical Information



Airspaced



Coating Curves