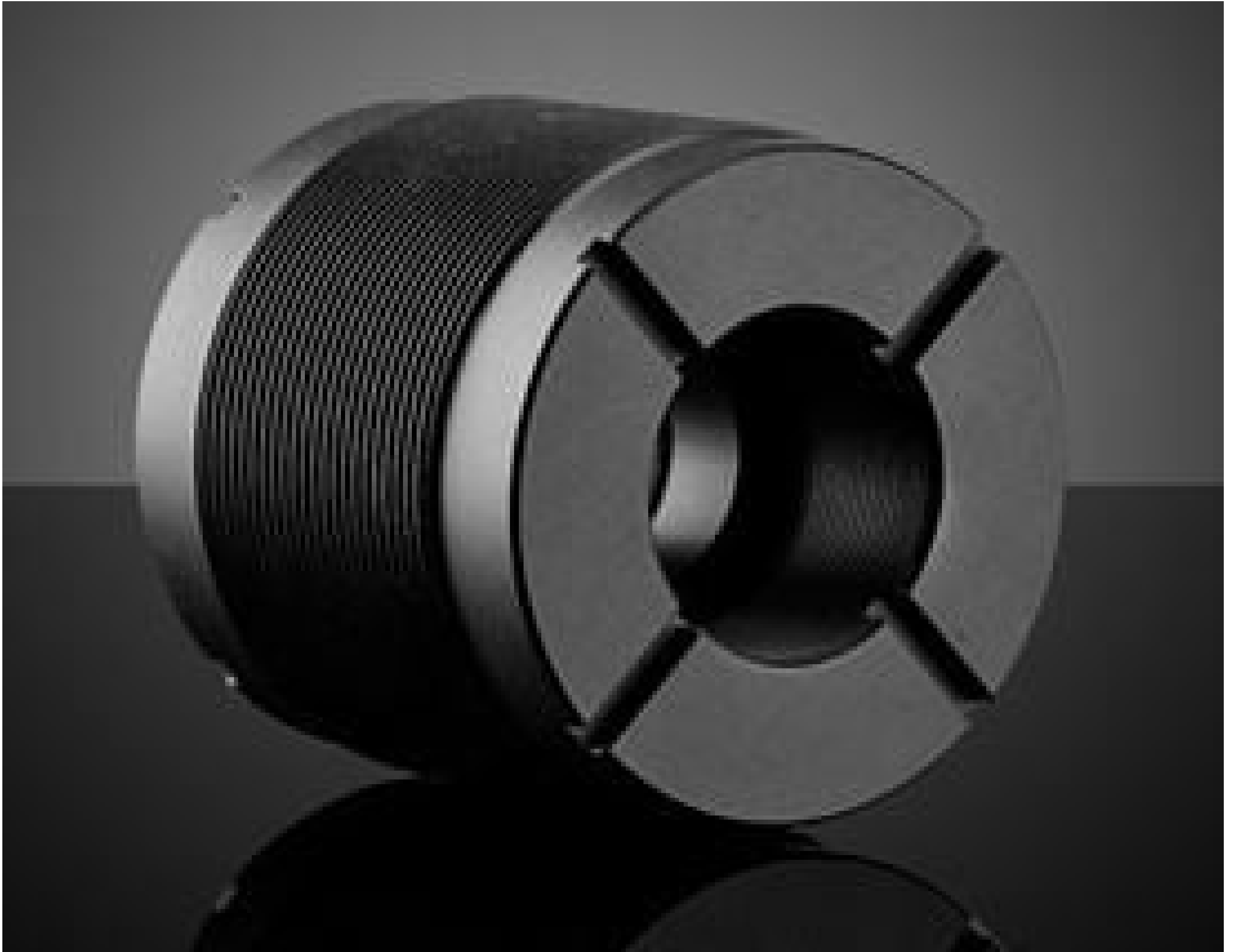


**TECHSPEC® 12.5mm Inner Pair Optic Mounts**



TECHSPEC Multi-Element Inner Pair Optic Mounts



Stock **#11-406** **2 In Stock**

⊖ 1 ⊕ **A\$128<sup>00</sup>**

**ADD TO CART**

Volume Pricing	
Qty 1-4	<b>A\$128.80</b> each
Qty 5+	<b>A\$123.84</b> each
Need More?	<a href="#">Request Quote</a>

Product Downloads

**General**

Fixed **Type:**

Optic Mount (Fixed) **Function:**

**Physical & Mechanical Properties**

**Total Length (mm):**

**Min. Thickness of Compatible Optics (mm):**  
1.0

**Max. Thickness of Compatible Optics (mm):**  
8.5

**Clear Aperture CA (mm):**  
11.2

**Construction:**  
Matte Black Anodized Aluminum (6061-T6)

**Edge Thickness of Compatible Optics (mm):**  
8.5

## Threading & Mounting

**Thread Type:**  
M29 x 0.75

**Diameter of Compatible Optics (mm):**  
12.5

## Regulatory Compliance

**RoHS 2015:**  
[Compliant](#)

**Certificate of Conformance:**  
[View](#)

**Reach 250:**  
[Compliant](#)

## Product Details

- Facilitate Imaging System Construction
- Combine Lenses to Create Specific Magnifications for a Wide Wavelength Range
- Use Multi-Element Tubes and Accessories to Create Complete Imaging Systems
- Click [Here](#) to See How to Use the Multi-Element Tube System Components to Build an Optical System.

TECHSPEC® Multi-Element Inner Pair Optic Mounts enable the combination of two optics of the same diameter in a single mount with a constant distance between them. Combining different lenses of varying focal lengths allows for the creation of relay lens assemblies. Choose from our Optical Lenses the correct wavelength specification for your application to create your ideal imaging system. The mounts support optical diameters from 12mm to 25mm, and edge thicknesses from 4mm to 16.5mm. With M29 x 0.75 threads on the outer diameter, these mounts can easily be positioned along the optical axis of our TECHSPEC® Multi-Element Outer Tubes. TECHSPEC® Multi-Element Inner Pair Optic Mounts come with two Delrin rings to ensure secure clamping force between the retainer rings and optics without damaging the optics.

**Note:** Our specially designed ME Spanner Wrench ([#13-567](#)) is highly recommended to move Inner Pair Optic Mounts back and forth smoothly utilizing a combined metric and English graduated scale. The hollow design enables transmission of output beam while adjusting lens position. Non-scaled ME Spanner Wrench ([#11-046](#)) is also available.