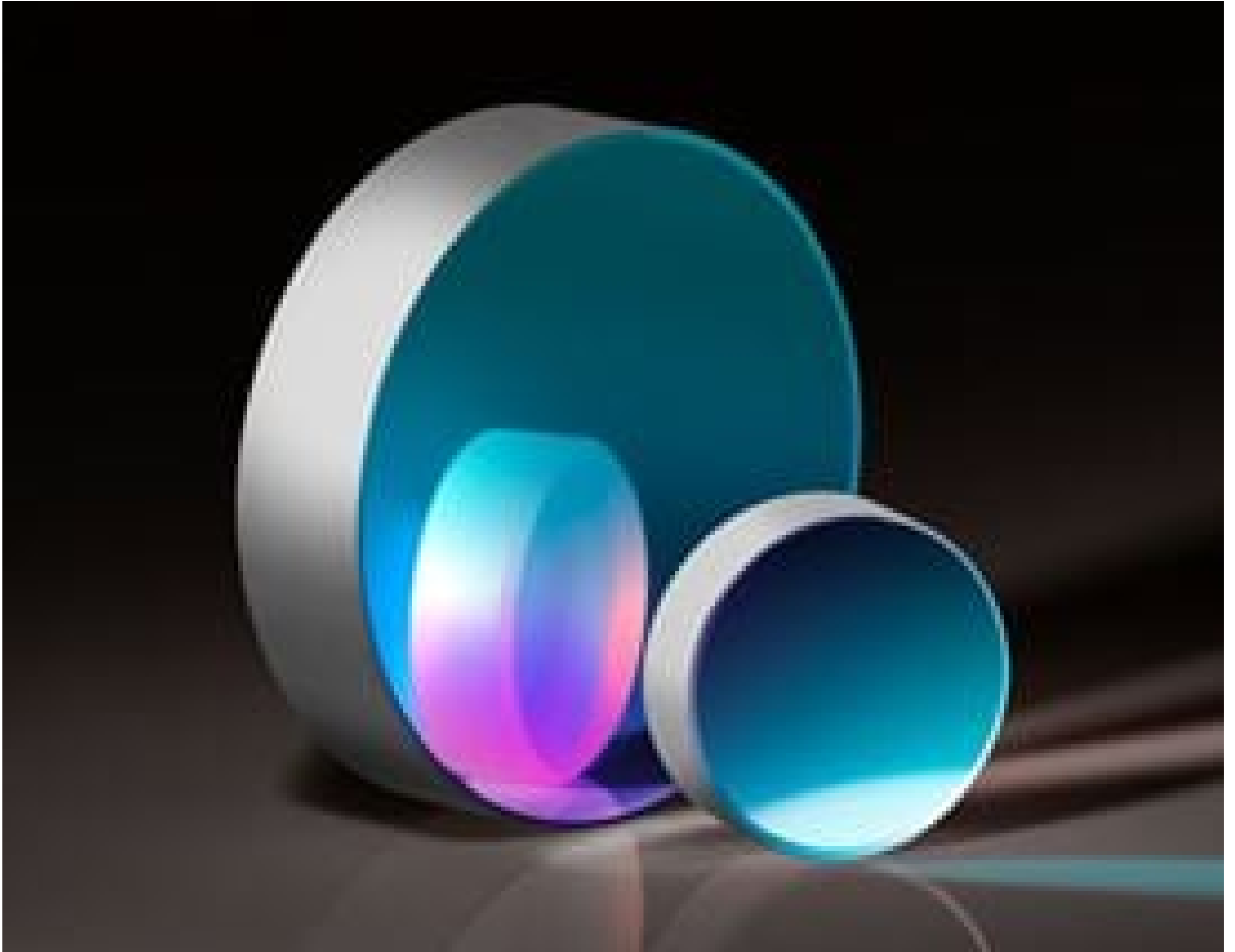


**TECHSPEC® 12.7mm Dia. UV, Precision Broadband Laser Mirror**



Stock **#48-015** **20+ In Stock**

⊖ 1 ⊕ **A\$225<sup>.60</sup>**

**ADD TO CART**

Volume Pricing	
Qty 1-5	<b>A\$225.60</b> each
Qty 6-25	<b>A\$198.40</b> each
Need More?	<a href="#">Request Quote</a>

Product Downloads

**General**

Laser Mirror **Type:**

Optical Power: *N*10 **Note:**

**Physical & Mechanical Properties**

>80 **Clear Aperture (%):**

Ground **Back Surface:**

12.70 +0.0/-0.2	<b>Diameter (mm):</b>
5.00 ±0.1	<b>Thickness (mm):</b>
<b>Optical Properties</b>	
20-10	<b>Surface Quality:</b>
R <sub>avg</sub> >99% @ 300 - 550nm	<b>Coating Specification:</b>
300 - 550	<b>Wavelength Range (nm):</b>
λ/10	<b>Surface Flatness (P-V):</b>
λ/20	<b>Irregularity (P-V) @ 632.8nm:</b>
Dielectric	<b>Coating Type:</b>
Dielectric Mirror (300-550nm)	<b>Coating:</b>
0-45	<b>Angle of Incidence (°):</b>
<a href="#">BOROFLOAT®</a>	<b>Substrate:</b> <input type="checkbox"/>
0.3 J/cm <sup>2</sup> @ 10ns @ 355nm	<b>Damage Threshold, By Design:</b> <input type="checkbox"/>

<b>Environmental &amp; Durability Factors</b>	
ML-M-13508-C	<b>Durability:</b>

<b>Regulatory Compliance</b>	
<a href="#">Compliant</a>	<b>RoHS 2015:</b>
<a href="#">Compliant</a>	<b>REACH 201:</b>
<a href="#">View</a>	<b>Certificate of Conformance:</b>

## Need different specs or modifications?

Edmund Optics offers comprehensive custom manufacturing services for optical and imaging components tailored to your specific application requirements. Whether in the prototyping phase or preparing for full-scale production, we provide flexible solutions to meet your needs. Our experienced engineers are here to assist—from concept to completion.

Our capabilities include:

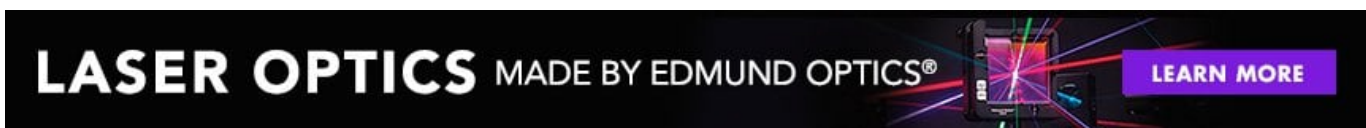
- Custom dimensions, materials, coatings, and more
- High-precision surface quality and flatness
- Tight tolerances and complex geometries
- Scalable production—from prototype to volume

Learn more about our [custom manufacturing capabilities](#) or submit an inquiry [here](#).

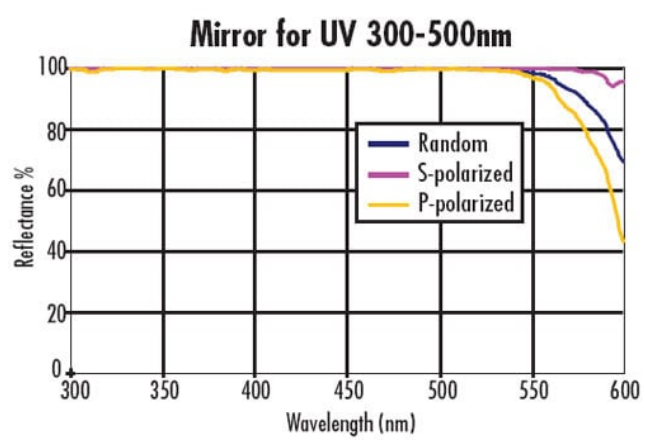
## Product Details

- Ideal for Tunable Lasers and Reflecting Multiple Laser Sources
- High Reflectivity from 0 - 45° for All Polarization States
- Variety of Coating Options Available

TECHSPEC® Precision Broadband Laser Mirrors feature high reflectivity and are ideal for UV, visible, and NIR beam steering applications. The broadband dielectric enhanced silver coatings feature >98% reflectivity from 450nm to 12µm wavelengths at incident angles from 0 - 45°. These mirrors meet ML-M-13508-C durability standards. [TECHSPEC® Precision Broadband Laser Mirrors](#) are ideal for demanding laser applications requiring high laser damage thresholds including laser scanning and beam steering. The mirrors have a BOROFLOAT® substrate, and are offered in 12.70, 25.40, and 50.80mm diameters.



## Technical Information



## Compatible Mounts

---