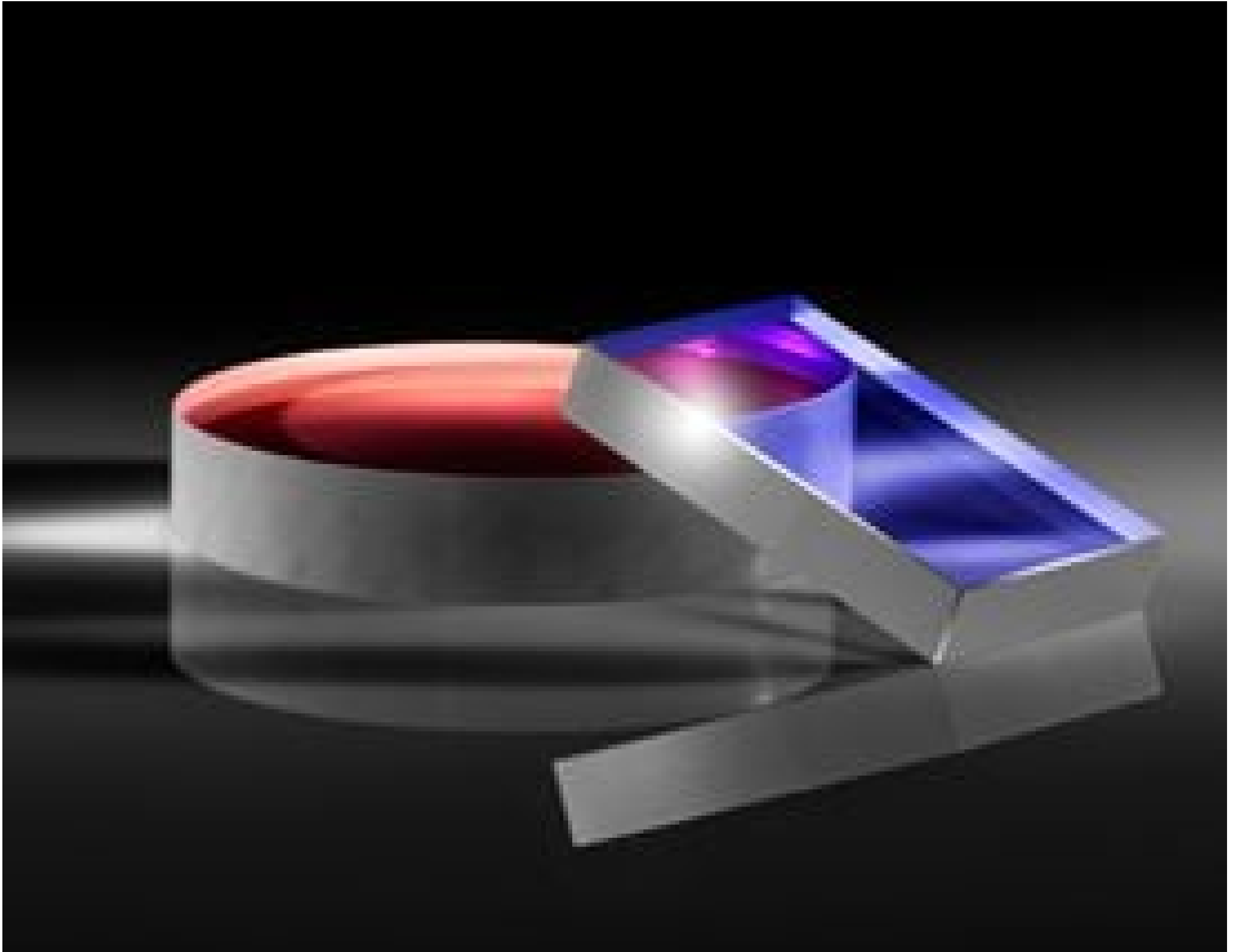


[See all 22 Products in Family](#)

TECHSPEC® 12.7 x 6.35mm, 10' Wedge, Mirror Substrate



TECHSPEC® Laser Mirror Substrates

Stock #21-251 **20+ In Stock**

- 1 + A\$150⁰⁰

ADD TO CART

Volume Pricing	
Qty 1-10	A\$150.40 each
Qty 11-25	A\$132.80 each
Qty 26-50	A\$116.80 each
Need More?	Request Quote

Product Downloads

General

Laser Mirror Substrate **Type:**

Physical & Mechanical Properties

10 ±5 **Parallelism (arcmin):**

80 **Clear Aperture (%):**

Commercial Polish	Back Surface:
12.70 +0.00/-0.10	Diameter (mm):
6.35 ±0.01	Thickness (mm):
Optical Properties	
10-5	Surface Quality:
λ10	Surface Flatness (P-V):
Uncoated	Coating:
Fused Silica (Corning 7980)	Substrate: <input type="checkbox"/>
Regulatory Compliance	
View	Certificate of Conformance:

Product Details

- λ10 and λ20 Surface Flatness and 10-5 Surface Quality
- High Quality Fused Silica Substrates
- Imperial Sizes with Circular or Rectangular Geometries
- [Window Substrates](#) Also Available

TECHSPEC® Laser Mirror Substrates are manufactured from high quality fused silica and are designed for use with high power laser sources. These mirrors feature excellent surface specifications, including λ10 and λ20 surface flatness and 10-5 surface quality, to limit the possibility of reduced performance due to surface defects. The high surface quality of these mirror blanks also makes them ideal for use in demanding intra-cavity laser applications. TECHSPEC Laser Mirror Substrates are available in standard imperial sizes, with either circular or rectangular geometries. Please contact us if your application requires a custom size laser mirror substrate.

Compatible Mounts

;