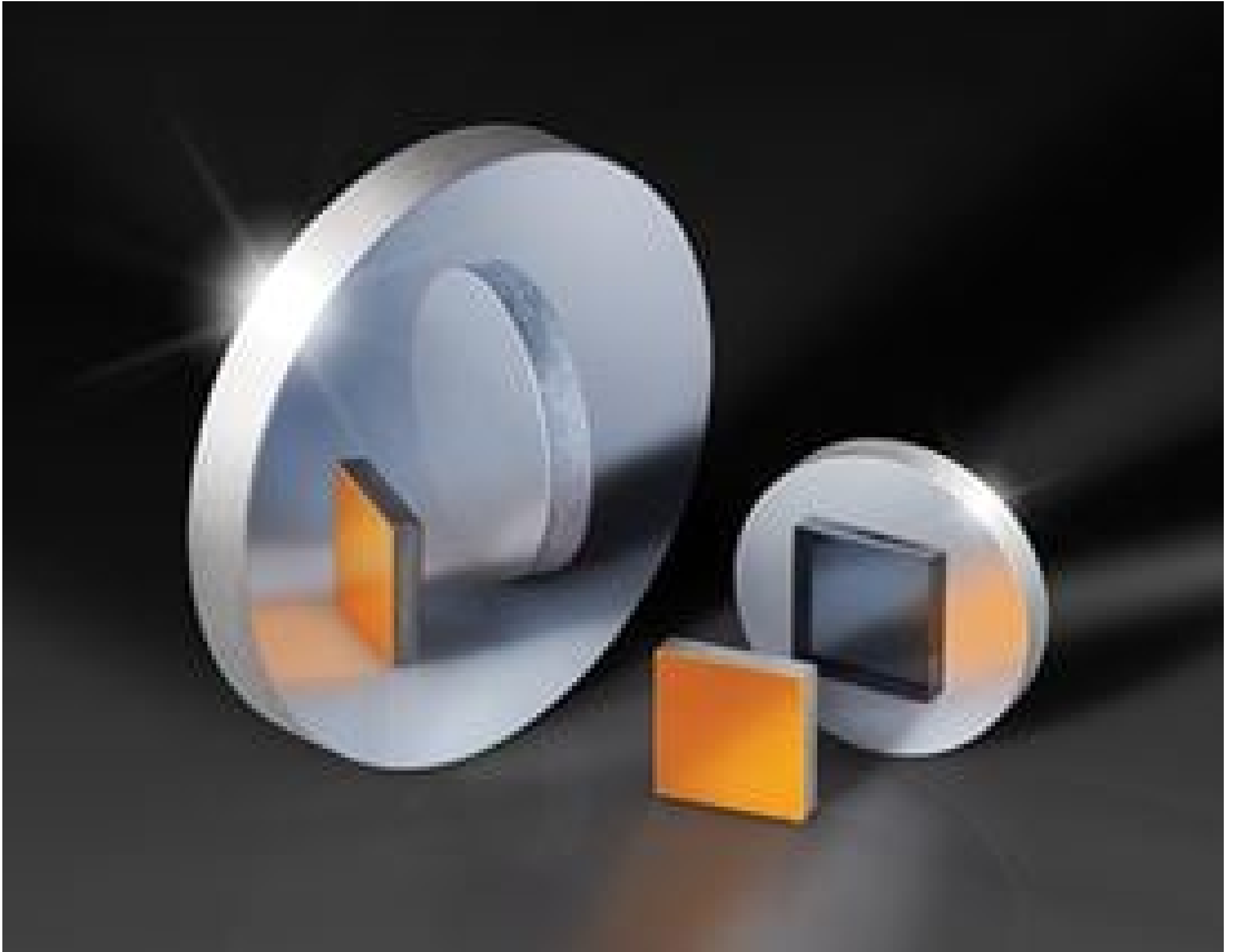


TECHSPEC® 15mm Dia Enhanced Aluminum, $\lambda/20$ Mirror



Stock #34-356 **1 In Stock**

⊖ 1 ⊕ A\$235^{.20}

ADD TO CART

Volume Pricing	
Qty 1-5	A\$235.20 each
Qty 6-25	A\$188.80 each
Qty 26-49	A\$176.00 each
Need More?	Request Quote

Product Downloads

General

Flat Mirror Type:

Physical & Mechanical Properties

15.00 +0.0/-0.20 Diameter (mm):

3.00 ±0.20 Thickness (mm):

Commercial Polish **Back Surface:**

90.00 **Clear Aperture (%):**

Ground, protective bevel as needed **Edges:**

30.00 **Parallelism (arcsec):**

Optical Properties

Metal **Coating Type:**

Enhanced Aluminum (450-650nm) **Coating:**

$\lambda/20$ (flatness pre-coating) **Surface Flatness (P-V):**

450 - 650 **Wavelength Range (nm):**

Fused Silica (Corning 7980) **Substrate:**

$R_{avg} > 95\%$ @ 450 - 650nm **Coating Specification:**

20-10 **Surface Quality:**

Regulatory Compliance

Compliant **RoHS 2015:**

View **Certificate of Conformance:**

Compliant **Reach 247:**

Custom

Edmund Optics offers comprehensive custom manufacturing services for optical and imaging components tailored to your specific application requirements. Whether in the prototyping phase or preparing for full-scale production, we provide flexible solutions to meet your needs. Our experienced engineers are here to assist—from concept to completion.

Our capabilities include:

- Custom dimensions, materials, coatings, and more
- High-precision surface quality and flatness
- Tight tolerances and complex geometries
- Scalable production—from prototype to volume

Learn more about our [custom manufacturing capabilities](#) or submit an inquiry [here](#).

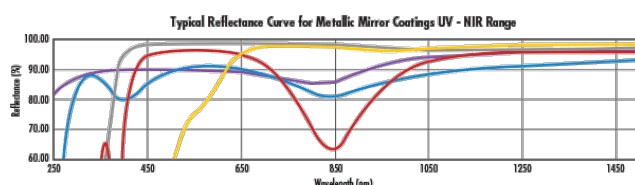
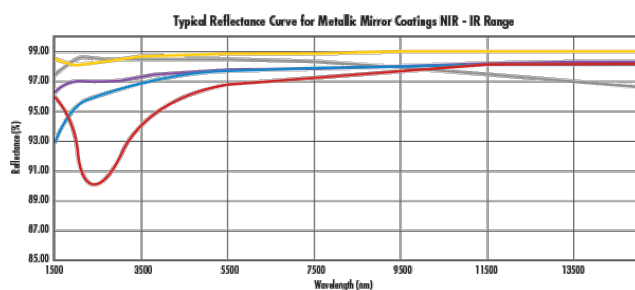
Product Details

- Precision Fused Silica Substrate
- 20-10 Surface Quality
- Low Coefficient of Thermal Expansion

TECHSPEC® $\lambda/20$ First Surface Mirrors are polished to industry leading surface accuracy and quality specifications to minimize reflected wavefront error. These mirrors feature a precision fused silica substrate with a low coefficient of thermal expansion. Multiple coating options are available, allowing these mirrors to be integrated into applications spanning the visible through infrared spectra. TECHSPEC® $\lambda/20$ First Surface Mirrors are ideal for beam steering and reflection applications and are available in a variety of size, thickness, and coating options.

Note: Surface flatness is measured before coating.

Technical Information



Range (nm)	% Reflection	Range (nm)	% Reflection	Range (nm)	% Reflection	Range (nm)	% Reflection	Range (nm)	% Reflection
0.4 - 0.7	85	0.45 - 0.65	95	0.25 - 0.45	89	0.7 - 2.0	96	0.45 - 2.0	98
0.4 - 2.0	90	-	-	0.25 - 0.70	85	2.0 - 10.0	96	2.0 - 10.0	98

Coating Curves

Compatible Mounts
