

[See all 7 Products in Family](#)

Photometrics Retiga E9 USB 3.2 Camera, 1T-01-RET-E9-M-C



Stock #90-395 **NEW** [CONTACT US](#)

1 **A\$14,320⁰⁰**

ADD TO CART

Volume Pricing

Qty 1+	A\$14,320.00 each
Need More?	Request Quote

Product Downloads

Monochrome **Spectrum:**

General

Monochrome Camera **Type:**

1T-01-RET-E9-MC **Model Number:**

Teledyne Photometrics **Manufacturer:**

Retiga E

Camera Series:

Note:

Includes:
USB Cables
USB Interface Card
12V/ 5A power supply with international power cord set
(2) Single-line MMCX trigger cables
USB memory device containing PVCAM library and drivers
Quick Installation Guide

Physical & Mechanical Properties

Dimensions (mm):

86 x 86 x 89

Weight (g):

800

Housing:

Full

Optical Properties

Wavelength Range (nm):

400 - 1000

Sensor

Sensor Format:

1"

Resolution (Megapixels):

9.00

Frame Rate (fps):

25.00

Pixels (H x V):

3,000 x 3,000

Sensing Area, H x V (mm):

11.28 x 11.28

Imaging Sensor:

Sony IMX533

Type of Sensor:

Progressive Scan CMOS

Shutter Type:

Rolling

Pixel Depth:

16 bit

Exposure Time:

Up to an hour

Dynamic Range (dB):

92

Hardware & Interface Connectivity

Connector:

USB 3.2

Power Supply:

GPIO with #90-399

GPIOs:

1 configurable input, 3 configurable outputs

Synchronization:

Hardware Trigger (GPIO) or Software Trigger

Interface Port Orientation:

Back Panel

GPIO Connector Type:

BNC

Threading & Mounting

Mount:

C-Mount

Mounting Threads:

(1) ¼-20 thread per side

Environmental & Durability Factors

Operating Temperature (°C):

0 to 30

Storage Temperature (°C):

-20 to 60

Regulatory Compliance

RoHS 2015:

Exempt

Product Details

- Long Exposure CMOS (Over 60 Minutes)
- Feature Extended Dynamic Range (EDR)
- Dual Imaging Modes for Flexibility
- Scientific Cameras for High Sensitivity Microscopy Applications

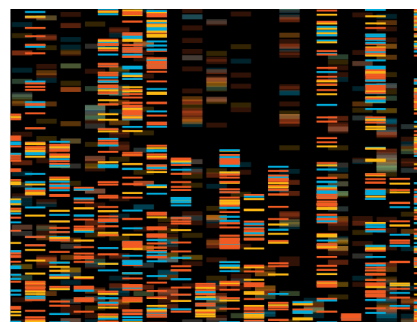


Teledyne Photometrics Retiga E USB Cameras feature ultra-low dark current (<0.001 electrons/pixel/second), enabling exposure times of over an hour for low-light and long-duration imaging. The cameras feature EDR mode, which combines a large full-well capacity with low read noise to capture both intense and weak signals in the same image. The Retiga E series offers dual imaging modes; a long exposure mode enables ultra-sensitive, low-light imaging, and a fast capture mode for high-speed acquisition. The dual modes provide flexible performance for both static and dynamic scientific applications. Teledyne Photometrics Retiga E USB Cameras are ideal for time-lapse imaging in cell colony growth, fluorescence microscopy, and bioluminescence/chemiluminescence imaging. These cameras include Teledyne's proprietary-designed software platforms, Beacon and PVCAM, for optimizing camera performance and ease of system integration.

Long Exposure Imaging

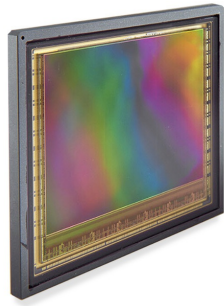
Thanks to major breakthroughs in thermal noise control, Retiga E CMOS cameras have an unprecedented ultra-low dark current of <0.001 electrons per pixel per second, allowing for exposure times of over an hour.

Stretching exposure times from seconds to minutes to hours in this manner results in comfortable detection of even the weakest signals, ideal for imaging luminescence.



Extended Dynamic Range

As well as Speed and Long Exposure modes, Retiga E cameras feature Extended Dynamic Range (EDR) mode, which combines a large full well capacity with a low read noise to result in ~2.5x more dynamic range than other modes, easily capturing both intense and weak signals in the same image.



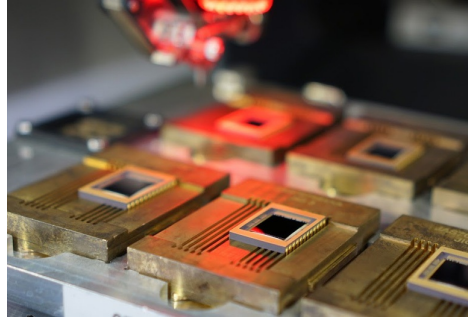
Small Pixel Imaging

The Retiga E20 features our smallest-ever pixel at 2.4 μm , which results in high-resolution imaging at even the lowest magnifications. Combined with a 20-Megapixel array (5472 x 3648) the Retiga E20 can pick out even the smallest details from large samples in a high-throughput manner.

With low noise contribution and a high peak QE, the Retiga E20 will deliver high quality images of your samples even in low-light conditions.

High Speed Mode

As well as the 'Long Exposure' mode, Retiga E cameras feature a 'Fast Capture' mode that operates at 100 fps for the Retiga E7, across the full 7 megapixel sensor. This flexibility allows the Retiga E7 to capture fast, dynamic signals, or to switch to long exposure in order to service a wide range of imaging applications.



OEM Integration

Interfacing is simple with the Retiga E Family by design. With their compact format and single cable interface, hardware integration is straightforward. The addition of onboard triggering, Windows/Linux support, and our dedicated OEM team make integrating and customising the Retiga E7 or Retiga E20 a painless process.