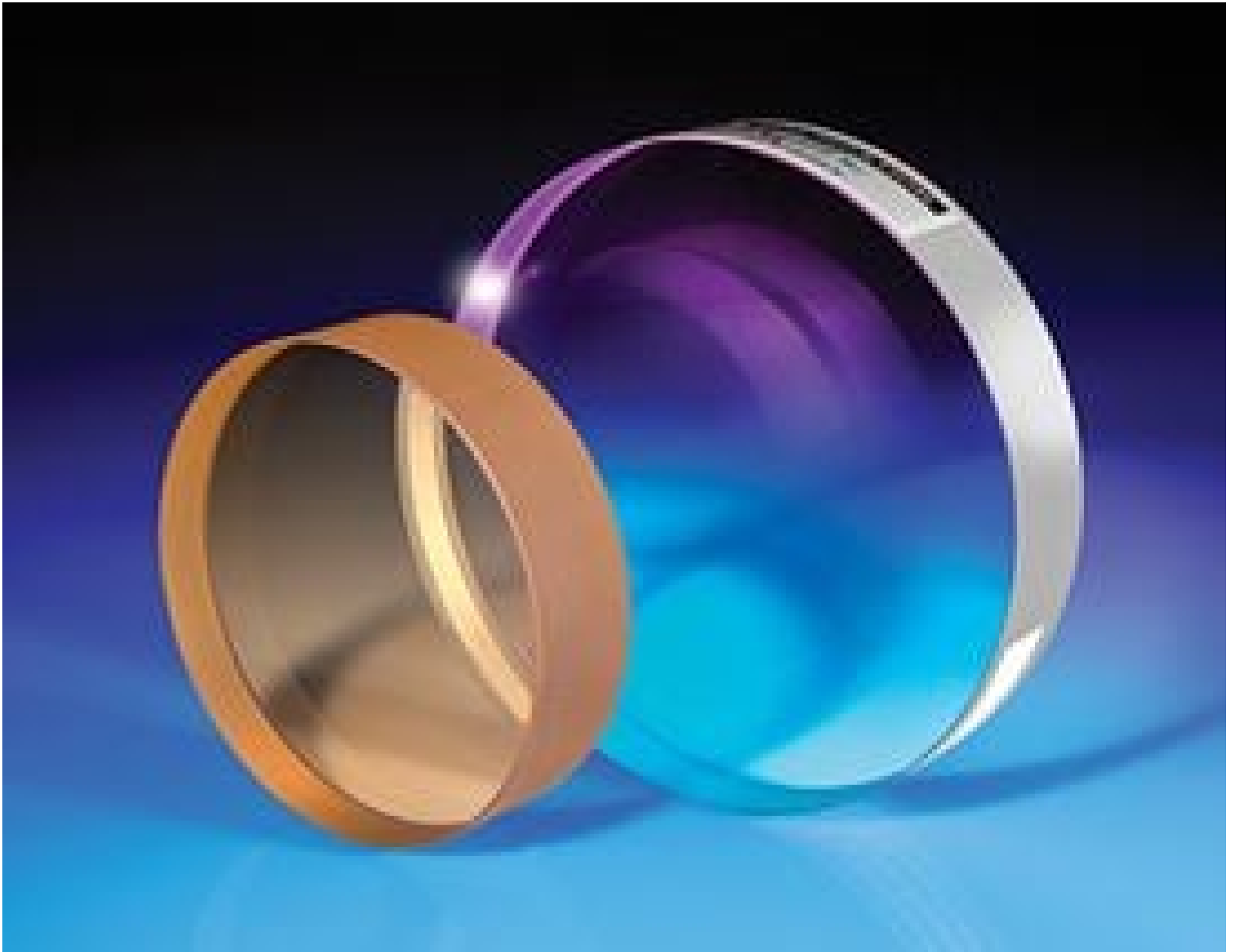


## TECHSPEC® 203.2mm Dia. $\lambda/10$ Fused Silica Optical Flat



Stock #31-390-000 3-5 DAYS

1 **A\$5,980.80**

**ADD TO CART**

Qty 1-2  
A\$5,980.80

Qty 3+  
A\$5,382.40

Volume Pricing  
[Request Quote](#)

Get Product Downloads

Surface Flatness (P-V):  
 $\lambda/10$

Abbe Number ( $v_d$ ):  
67.8

Coating:

Uncoated

**Coefficient of Thermal Expansion CTE (10<sup>-6</sup>/°C):**

0.52 (+5 to +35°C)  
0.57 (0 to +200°C)  
0.48 (-100 to +200°C)

**Diameter (mm):**

203.20 +0.00/-1.00

**Thickness (mm):**

38.10 ±2.5

**Diameter (inches):**

8.00 +0.00/-0.04

**Thickness (inches):**

1.50 ±0.10

**Clear Aperture CA (mm):**

182.90

**Color:**

Clear

**Construction:**

Single Surface

**Density (g/cm<sup>3</sup>):**

2.20

**Index of Refraction n<sub>d</sub>:**

1.458

**Knoop Hardness (kg/mm<sup>2</sup>):**

522

**Parallelism (arcmin):**

≤3

**Poisson's Ratio:**

0.16

**Substrate:**

[Fused Silica](#)

**Surface Quality:**

60-40

**Type:**

Interferometry Window

**Wavelength Range (nm):**

200 - 2200

**Young's Modulus (GPa):**

73

**Bevel:**

Protective as needed

## Regulatory Compliance

**RoHS 2015:**

[Compliant](#)

**Reach 211:**

[Compliant](#)

**Certificate of Conformance:**

[View](#)