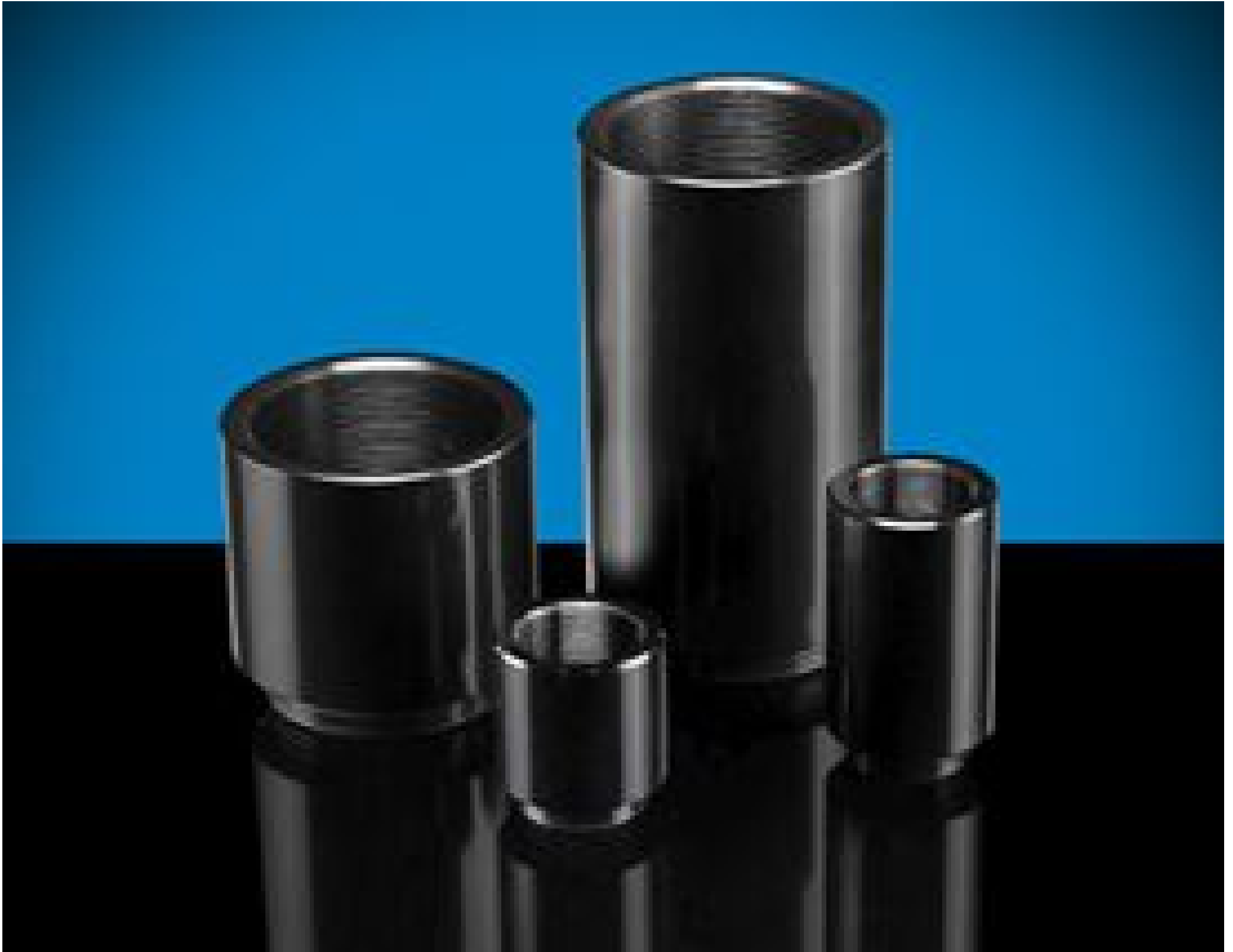


TECHSPEC® 50mm SM05 Lens Tube



TECHSPEC® ID Lens Tubes

Stock #35-780 **16 In Stock**

⊖ 1 ⊕ A\$32⁰⁰

ADD TO CART

Volume Pricing	
Qty 1-5	A\$32.40 each
Qty 6-25	A\$28.80 each
Qty 26+	A\$27.20 each
Need More?	Request Quote

Product Downloads

General

Extension Tube **Type:**

Extension Tube (Fixed) **Function:**

Physical & Mechanical Properties

50.0 **Extension Length (mm):**

10.0 Clear Aperture CA (mm):

Anodized Aluminum Construction:

16.0 Outer Diameter (mm):

Threading & Mounting

0.535 x 40 TPI (SM05) Thread Type:

Regulatory Compliance

Compliant RoHS 2015:

View Certificate of Conformance:

Compliant REACH 241:

Product Details

- Enables Mounting for 25/25.4mm and 12.5/12.7mm Optics
- Ideal for Optical System Creation and Integration
- Continuous SM1 or SM05 Barrel Thread for Mounting Multiple Components

The TECHSPEC® SMLens Tubes offer an efficient method for mounting single or multiple optical components. Featuring anodized aluminum construction for a light-weight mounting solution, these lens tubes include a barrel thread that extends through the barrel for continuous lens mounting space. The TECHSPEC SMLens Tubes utilize SM1 (1.035" x 40 TPI) or SM05 (0.535" x 40 TPI) threads and are ideal for integration with [TECHSPEC Plano-Convex](#) and [TECHSPEC Achromatic Lenses](#).

Note: Retainer ring sold separately. Spanner wrench [#11-046](#) has a specialized wrench head on one end designed for SMTube System retainer ring adjustment.