

70mm Dia Ring Light Blue

See More by [CCS](#)



CCS High-Angle LED Ring Lights

Stock **#21-782** **6 In Stock**

A\$1,712⁰⁰

ADD TO CART

Volume Pricing	
Qty 1+	A\$1,712.00 each
Need More?	Request Quote

Product Downloads

SPECIFICATIONS

General

LDR2-70BL2 **Model Number:**

LED Illuminator **Type of Illumination:**

Manufacturer:

CCS

High-Angle Ring Light

Geometry:

Illumination Mode:

Constant

Physical & Mechanical Properties

Dimensions (mm):

OD: 70, ID: 35, Height: 22

Weight (g):

120

Optical Properties

Color:

Blue

Wavelength (nm):

470.00

Electrical

Power Consumption (W):

7.6

Hardware & Interface Connectivity

Input Voltage (V):

24

Power Supply:

Power Supply Required and Sold Separately.

USA: [#73-491](#)

Europe: [#73-491](#)

Japan: [#89-513](#)

Korea: [#33-773](#)

China: [#73-491](#)

Regulatory Compliance

RoHS 2015:

[Exempt](#)

Reach 224:

[Contains SVHC\(s\)](#)

Certificate of Conformance:

[View](#)

PRODUCT DETAILS

- High-Angle, Direct Lighting for Uniform Intensity
- Designed for Constant Output Power for Prolonged Use
- Ideal for Brightfield Illumination

CCS High-Angle LED Ring Lights provide illumination at a high angle of incidence for brightfield imaging applications. High density LED mounting and a flexible circuit board ensures uniform illumination intensity across all sizes of ring lights. These high-angle LED ring lights are designed to maintain constant output power over prolonged periods. CCS High-Angle LED Ring Lights alleviate the influence of slight differences in position or inclination of a sample for stable imaging and are ideal for industrial and manufacturing applications.

3D-Printable Mount Files



Ring Light Configuration

**DOWNLOAD
NOW**

Designed for use with the [Articulating Arm Mounting Systems](#), these 3D-printed mounts allow easy positioning of lights in brightfield or darkfield setups. The design is based on mounting illumination to 1/4-20" breadboards or into 80/20 extrusion systems, but can be adapted based on user needs. Mounts are available for ring, bar, line, and inline spot lights.



Application Note

Illumination Mounts for Machine Vision Applications

[Read](#) 



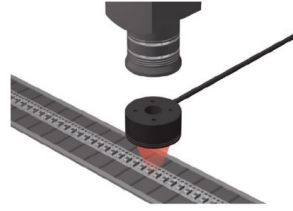
Video

Assembly of 3D Printed Mounts for Common Illumination Geometries

[Watch](#) 

TECHNICAL INFORMATION

Imaging Example: Imaging Electrodes of Electronic Parts



Description	Visual inspection
Workpiece	Electronic parts
Conventional lighting	LED Bar Light
New lighting	LDR2-32RD2
Result	Improved uniformity

Workpiece image



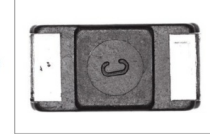
Electronic parts

LED Bar Light



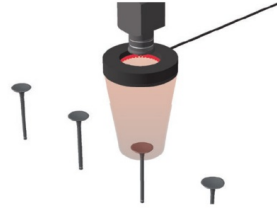
It's difficult to make an image of the electrode part using a Bar Light.

LDR2-32RD2



A Ring Light can illuminate the electrode part evenly and make an image.

Imaging Example: Imaging Text on Intake Valves



Description	Character recognition
Workpiece	Intake valves (automobile parts)
Conventional lighting	LED Ring Light
New lighting	LDR2-50RD2
Result	Emphasized characters

Workpiece image



Intake valves

LED Ring Light



It's difficult to clearly recognize the text due to the inner indentation.

LDR2-50RD2



Allows for image that makes the character edges stand out.