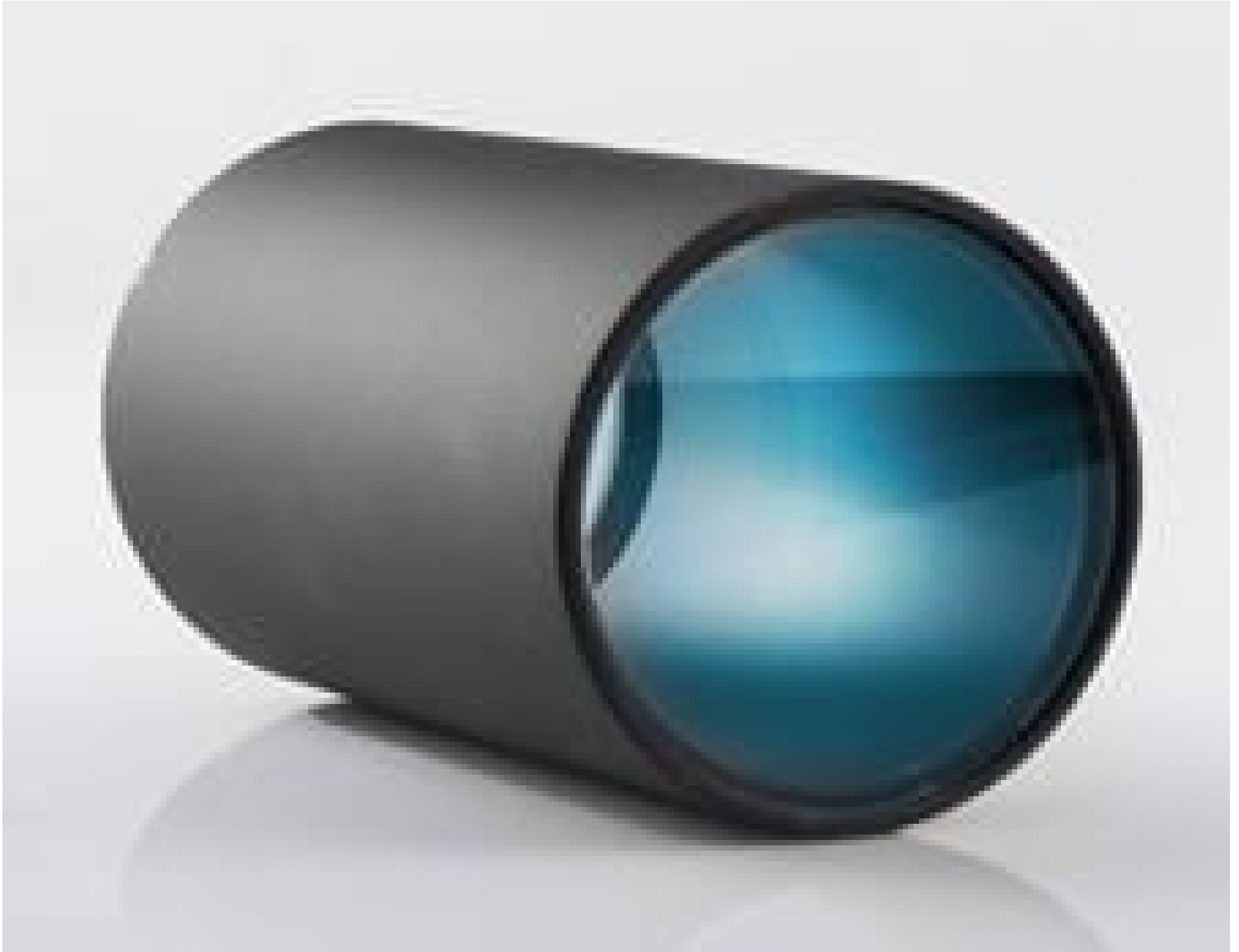


[See all 66 Products in Family](#)

## 77L x 41mm Dia. Lens Tube, IP65/67

See More by [IDS Imaging Development Systems](#)



#62-067

Stock **#62-067** **1 In Stock**

1  **A\$203<sup>20</sup>**

**ADD TO CART**

Volume Pricing	
Qty 1+	<b>A\$203.20</b> each
Need More?	<a href="#">Request Quote</a>

**Note:** This item requires accessories for use | [Learn More](#)

### Product Downloads

### General

Camera Accessory

**Type:**

**Note:**  
Accommodate C-Mount lens up to 64mm in length  
(without thread), 35mm in diameter

### Regulatory Compliance

Compliant

RoHS 2015:

[View](#)

Certificate of Conformance:

Compliant

REACH 241:

## Product Details

- Designed for Harsh Environments
- Robust IP65/67 Housing for Dust and Washdown Protection
- Compatible with [TECHSPEC® Cw Series Lenses](#)
- IP65/67 Rated Accessories and Illumination Also Available

IDS Imaging uEye+ FA IP65/67 PoE Cameras feature robust IP65/67 rated housings to withstand harsh industrial environments, providing protection against dirt, dust, and water. These cameras provide plug-and-play functionality and require no additional enclosures when paired with [TECHSPEC® Cw Series Lenses](#). Featuring IP65/67 rated accessories, these cameras utilize IDS Imaging's latest Peak SDK platform that supports GenICam and GigE Vision standards, simplifying system integration and software development. IDS Imaging uEye+ FA IP65/67 PoE Cameras are ideal for a wide variety of demanding applications requiring washdown and dust resistance including factory automation, medical technology, and machine vision.

## Technical Information

EO USB2.0 Harsh Environment (HE)  
Camera with Lens Enclosure

