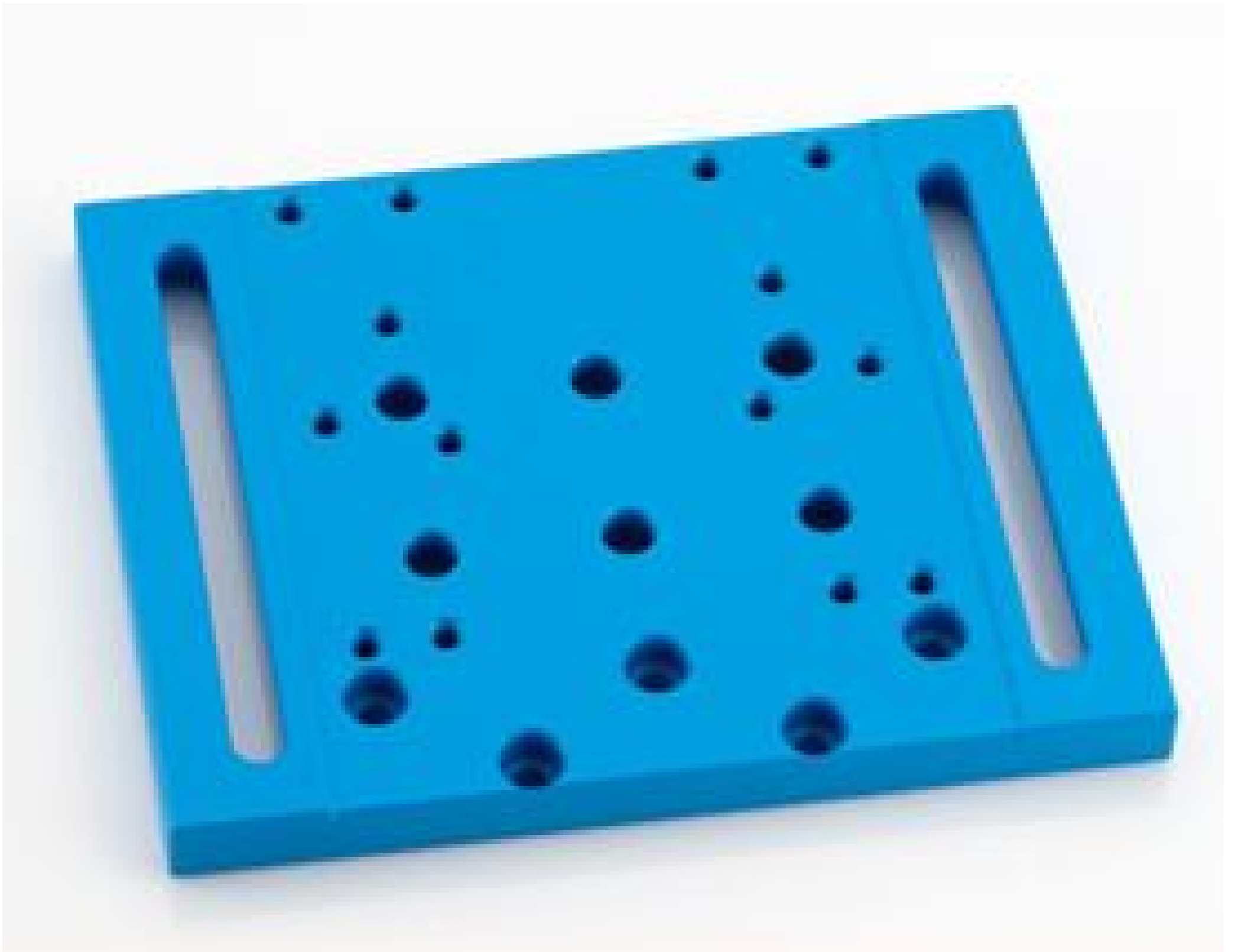


[See all 22 Products in Family](#)

TECHSPEC® 80mm Stage Breadboard Mounting Plate



80mm Stage Breadboard Mounting Plate

Stock #72-724 **3 In Stock**

⊖ 1 ⊕ A\$176⁰⁰

ADD TO CART

Volume Pricing

Qty 1+	A\$176.00 each
Need More?	Request Quote

Product Downloads

Regulatory Compliance

Compliant

RoHS 2015:

[View](#)

Certificate of Conformance:

Product Details

- High Precision, Monobloc Designs

- Integrated Motor and Controller
- Compatible with TECHSPEC Manual Stages

TECHSPEC Stainless Steel Motorized Linear Stages are a high-precision motion control solution for automated system alignment. The monobloc stainless steel design features ball bearing guides cut directly into the stage chassis, ensuring higher stiffness, straightness, and parallelism than typical stage assemblies. These motorized stages utilize the same mounting hole patterns as [TECHSPEC Manual Stages and Slides](#), allowing for the creation of combined manual and motorized optical systems, depending on the application's needs; this versatility is unique to Edmund Optics. TECHSPEC Stainless Steel Motorized Linear Stages are easily programmable and daisy chain compatible, ensuring fast setup of multi-axis automated systems. The stages deliver high precision for demanding photonics applications.
