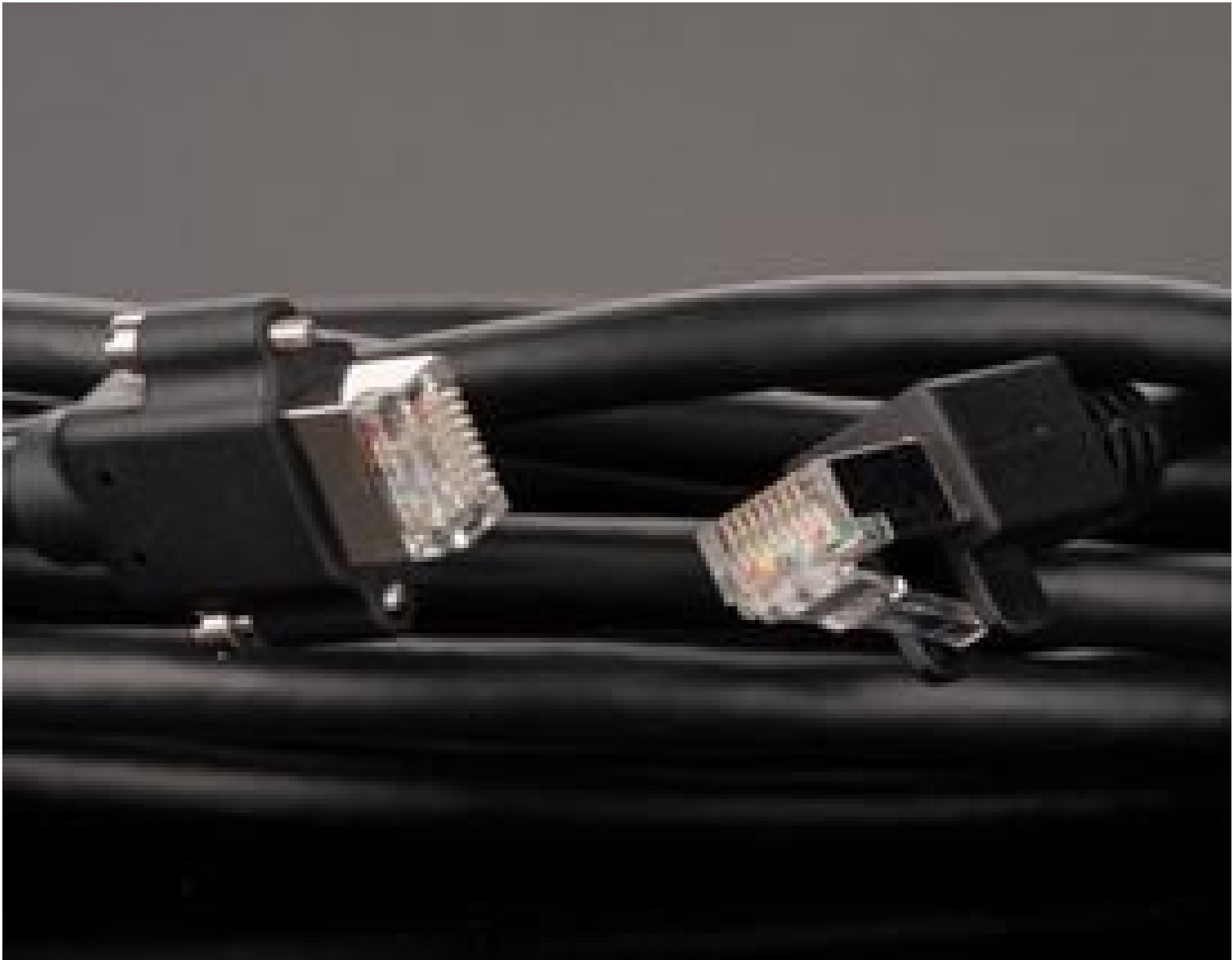


[See all 55 Products in Family](#)

Cat 6 GigE Cable with Locking Screws, 5m

See More by [Teledyne FLIR](#)



Cat 6 GigE Cable with Locking Screws, 5m (#86-785)



Stock **#86-785** 7 In Stock

-

1

+

A\$99²⁰

ADD TO CART

Volume Pricing	
Qty 1+	A\$99.20 each
Need More?	Request Quote

Note: This item requires accessories for use | [Learn More](#)

Product Downloads

SPECIFICATIONS

General

Camera Accessory

Type:

Physical & Mechanical Properties

Physical & Mechanical Properties	
5	Length (m):
Regulatory Compliance	
Compliant	RoHS 2015:
Compliant	Reach 223:
View	Certificate of Conformance:

PRODUCT DETAILS

- PoE (Power over Ethernet)
- GigE Vision and GenICam Compliant
- Ultra Compact Form Factor
- Extensive API Library and Included Spinnaker SDK



Teledyne FLIR IIS Blackfly S: Advanced Machine Vision Cameras with powerful features

Capture the images you need from advanced sensors in enclosed or board-level configurations

The **Blackfly® S** is a versatile and compact machine vision camera series that leverages the industry's most advanced area scan sensors in an ultra-compact form factor. It combines powerful features that easily produce the exact images required, accelerating application development. Combining both automatic and precise manual controls over image capture and on-camera pre-processing. With options ranging from high-speed performance, high-resolution images, polarization, or low-light sensitivity, the Blackfly® S series of cameras can deliver the required results.

With the selection of camera variations all sharing the same form factor, it makes it easy to develop once, deploy anywhere. On camera features include IEEE1588 clock synchronization and full compatibility with popular third-party software supporting either GigE Vision or USB3 Vision interfaces. The Blackfly® S is available in GigE, USB3, cased, and board-level versions.

Note: **GigE cable** sold separately and required for operation . Software available for **download**. **Blackfly® PoE GigE Cameras** are also available.

Blackfly® S GigE color / monochrome cameras

- On camera features include IEEE1588 clock synchronization and full compatibility with popular third-party software supporting GigE Vision. GigE models featuring Lossless Compression (LLC) are also available with higher maximum frame rates and lower bandwidth requirements, helping maximize output without compromising image quality.

Features

- Ultra-compact form factor (29mm x 29mm x 39mm)
- Leverage the latest CMOS sensors and new on-camera image processing features
- Harness increased binning flexibility, powerful auto-exposure controls and robust color transformation tools
- Improve cycle time using advanced camera controls and programmable logic
- Utilize sequencer, chunk data, event notification, counters, timers and logic blocks
- Choice of CMOS global shutter, polarization, and high-sensitivity BSI sensors
- Data interface options: GigE, USB3
- Color transformation tools for true-to-life color
- Advanced auto-algorithms or precise manual control over image capture and on-camera pre-processing
- On-camera features such as IEEE1588 clock synchronization, lossless compression, and deep learning inference
- Compatible with third-party software and hardware
- Support for a wide range of operating systems and host system architectures
- Rich sample code and descriptive API logging
- Simplified product iteration with consistent form factor across sensor sizes
- Camera control via FlyCapture SDK or 3rd-party USB3 Vision software

Applications

- Intelligent Transportation Systems
- Factory automation
- Bar code reading
- 3D scanning
- Life science instrumentation
- Biometrics kiosk solutions
- Ophthalmoscopy
- Automated optical inspection
- Food & Beverage industry

TECHNICAL INFORMATION

