

## English Post Pivot Base



Stock #53-355 **20+ In Stock**

⊖ 1 ⊕ A\$36<sup>00</sup>

**ADD TO CART**

Volume Pricing	
Qty 1-9	A\$36.80 each
Qty 10+	A\$32.96 each
Need More?	<a href="#">Request Quote</a>

### Product Downloads

#### General

English **Type:**

Includes 1/4-20 Cap Screws **Note:**

English Type (1/4-20) **Compatible Post Holder:**

#### Physical & Mechanical Properties

47.80 **Length (mm):**

19.10	<b>Width (mm):</b>
9.50	<b>Thickness (mm):</b>
Black Anodized Aluminum	<b>Construction:</b>

## Regulatory Compliance

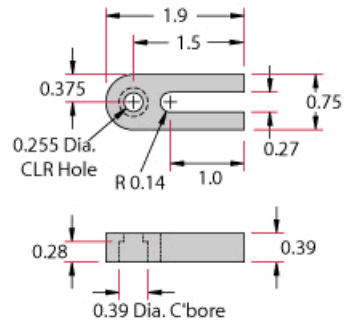
<a href="#">Compliant</a>	<b>RoHS 2015:</b>
<a href="#">Compliant</a>	<b>Reach 224:</b>
<a href="#">View</a>	<b>Certificate of Conformance:</b>

## Product Details

- Slot Adjustment Range of 1.00"

The narrow slotted mounting base is used for the positioning of 0.5" dia. stainless steel posts and post holder assemblies. The post/post holder is attached to the base via a counterbored clearance hole with a 1/4-20 socket screw. The base is held in place with another socket screw in the slot. The slot length allows the post to be centered at the mid-point laterally or at 45° on a 1" center hole breadboard. Anodized aluminum.

## Technical Information



Units: Inches