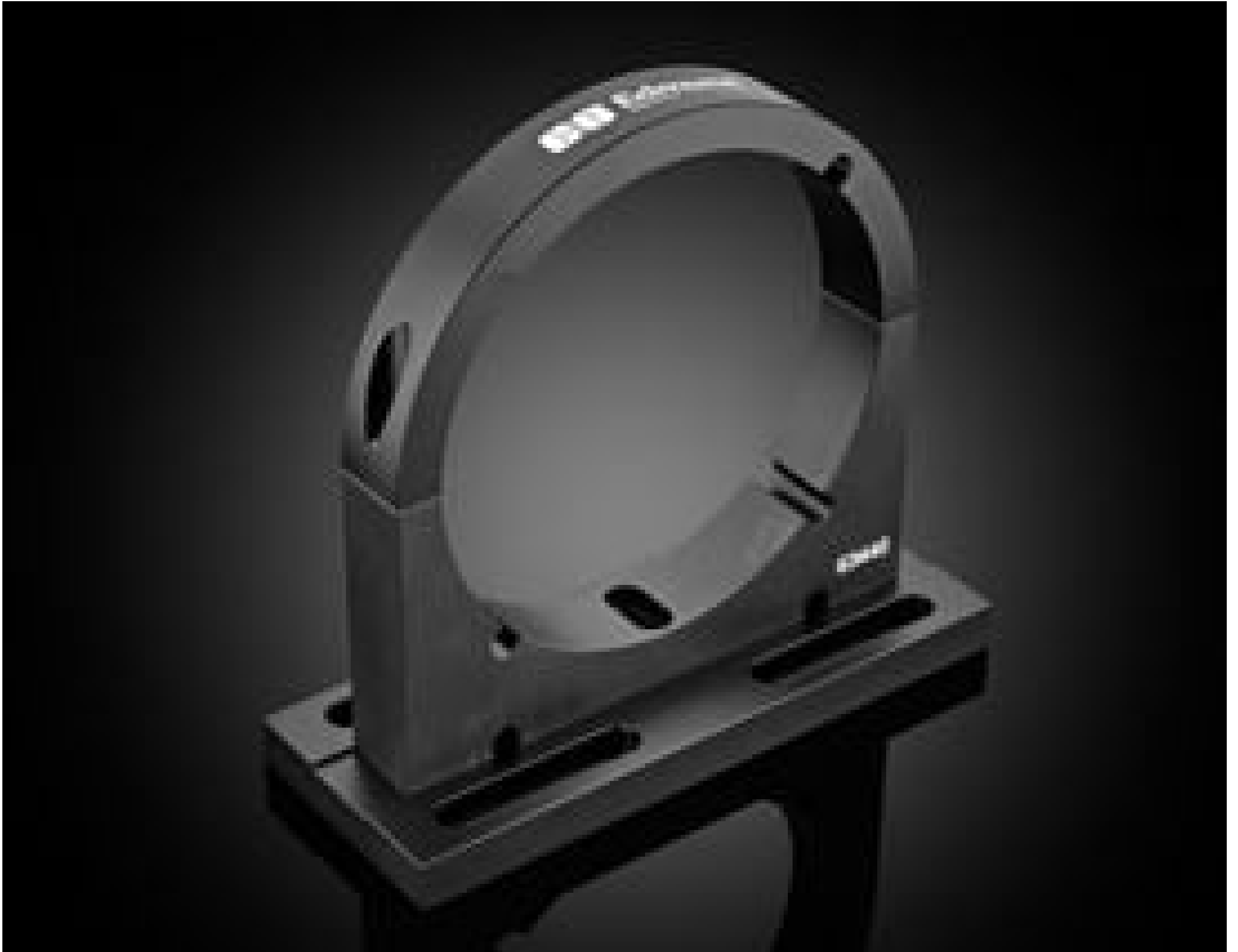


[See all 22 Products in Family](#)

TECHSPEC® Mounting Clamp, 138.6mm Inner Diameter



#63-440: Mounting Clamp, 138.6mm Inner Diameter

Stock **#63-440** **10 In Stock**

⊖ 1 ⊕ A\$704⁰⁰

ADD TO CART

Volume Pricing	
Qty 1+	A\$704.00 each
Need More?	Request Quote

Product Downloads

General

Lens Accessory **Type:**

Physical & Mechanical Properties

138.6 **Inner Diameter (mm):**

Optical Properties

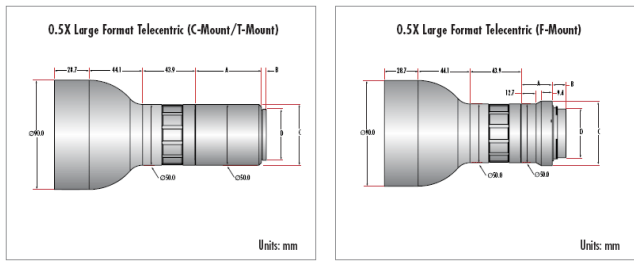
VS **Lens Wavelength Range:**

Product Details

- High Resolution f/6 Bi-Telecentric Lens for Measurement
- Up to 35 MegaPixels, 2.8µm Pixel Size Sensors
- APS-C, C-Mount, T-Mount, F-Mount Telecentric Lens
- Magnification from 0.28X to 1.7X

TECHSPEC® PlatinumTL™ Telecentric Lenses are designed for semiconductor and electronics inspection, measurement, and gauging applications. The precision designs feature high telecentricity (<0.1°), low distortion (<0.1%), and high light throughput with an adjustable aperture that achieves f/6 when fully open. Capable of supporting large format 28.7mm diagonal sensors, these lenses are compatible with the Sony IMX342 APS-C sensor and other similar format sensors such as the Sony IMX530. TECHSPEC® PlatinumTL™ Telecentric Lenses produce unparalleled levels of contrast yielding maximum image quality with the highest degree of measurement accuracy. These lenses are suitable for high vibration environments and feature a removable recessed set screw for securing the iris in place.

Technical Information



Description		Stock No.	Flange	Length (A)	Front Diameter (B)	Back Diameter (C)
0.28X	C-Mount	#62-933	17.5mm	230.8mm	60.5mm	33.5mm
0.5X	C-Mount	#62-932	17.5mm	174.9mm	50mm	33.5mm
1.7X	C-Mount	#63-232	17.5mm	189.5mm	60mm	46mm
0.28X	F-Mount	#62-922	46.5mm	167.6mm	138.6mm	55mm
	M42 x 1.0	#62-923	6.56mm	208.5mm	138.6mm	50mm
	M42 x 1.0	#62-924	19.53mm	195.5mm	138.6mm	50mm
0.5X	F-Mount	#62-912	46.5mm	143mm	90mm	55mm
	M42 x 1.0	#62-913	6.56mm	184mm	90mm	50mm
	M42 x 1.0	#62-914	19.53mm	171.1mm	90mm	50mm
0.9X	F-Mount	#62-902	46.5mm	170.8mm	65mm	55mm
	M42 x 1.0	#62-903	6.56mm	210.7mm	65mm	53mm
	M42 x 1.0	#62-904	19.53mm	197.8mm	65mm	53mm

