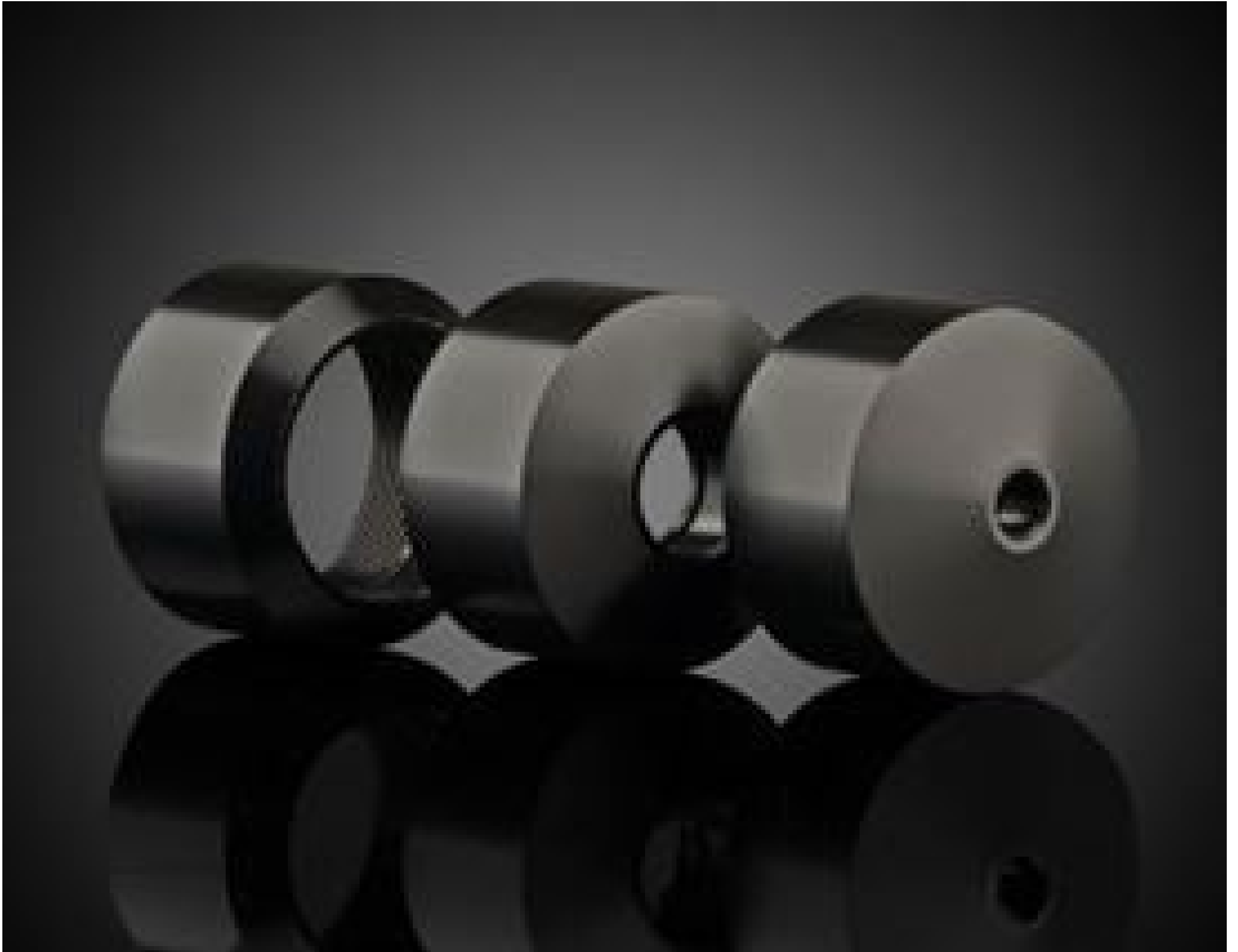


## SM1 Tube, 19.05mm Optic Adapter



Stock **#36-419** **9 In Stock**

- 1 + A\$48<sup>00</sup>

**ADD TO CART**

### Volume Pricing

Qty 1-5	A\$48.00 each
Qty 6+	A\$45.28 each
Need More?	<a href="#">Request Quote</a>

### Product Downloads

#### General

Fixed **Type:**

Circular **Type of Optics:**

SMTube System **Tube System Compatibility:**

#### Physical & Mechanical Properties

0.50 **Min. Thickness of Compatible Optics (mm):**

Max. Thickness of Compatible Optics (mm):  
8.50

Clear Aperture CA (mm):  
18.05

Construction:  
Black Anodized Aluminum

## Threading & Mounting

Size of Compatible Optics (mm):  
19.05

## Regulatory Compliance

RoHS 2015:  
[Compliant](#)

Certificate of Conformance:  
[View](#)

REACH 241:  
[Compliant](#)

## Product Details

- Compatible with any [SM1 Threaded Lens Tube](#)
- Mounts 5mm to 19.05mm Optical Components
- Drop-In Mounting for Easy Assembly

SM Lens Tube Drop-In Mounts allow easy integration of many standard diameter lenses into SM1 Tube Systems. Featuring a common outer diameter of 25.4mm, the mount design ensures lenses are well centered when dropped into [SM1 threaded lens tubes](#). These drop-in mounts expand the mounting diameter capability of any SM1 threaded lens tube system from only 25.0/25.4mm diameter optics to also include 5mm, 6mm, 9mm, 10mm, 15mm, 18mm, and 19.05mm diameter optics. SM Lens Tube Drop-In Mounts are compatible with any SM1 threaded lens tube, making these mounts an essential addition to any lab or OEM system setup.